



CITY NAPA  
RESIDENCES

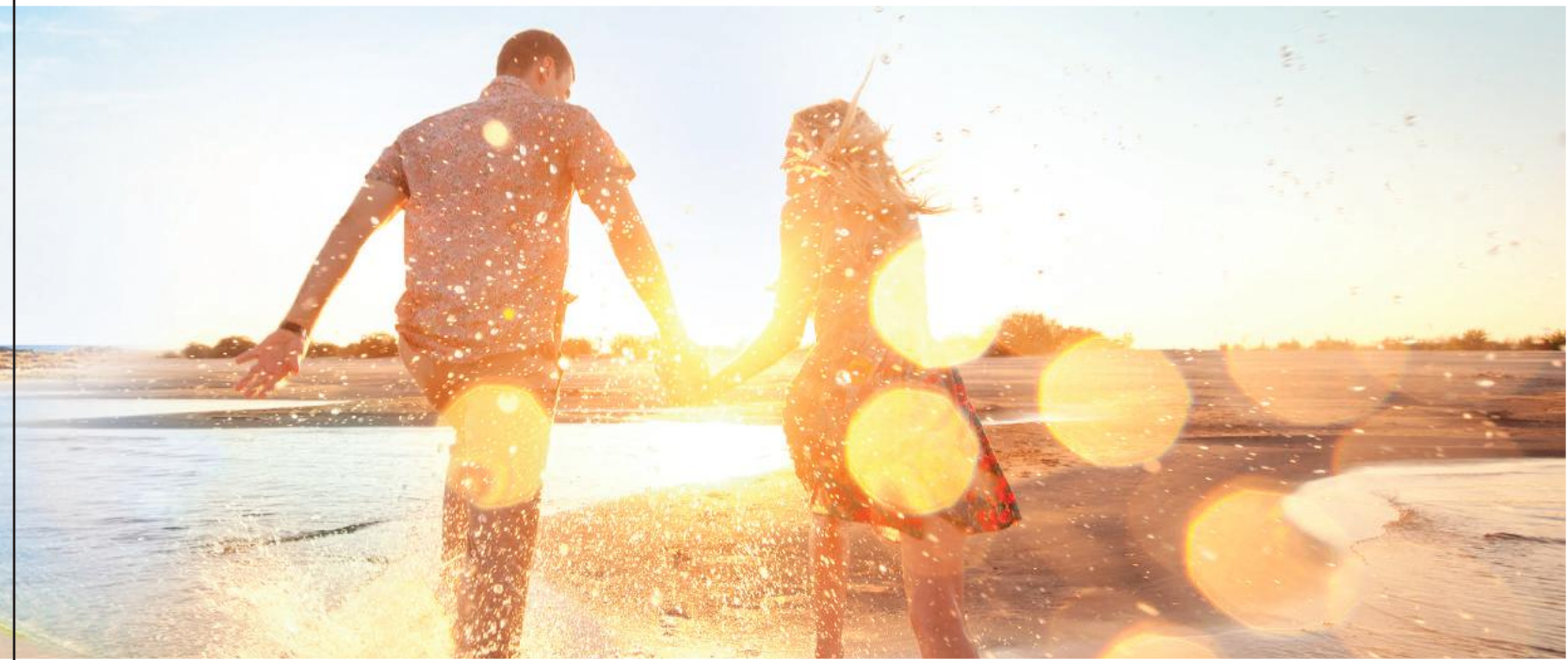
AYIA NAPA - CYPRUS

---



CENTRAL COMFORT  
AND ELEGANCE





## CYPRUS IS CALLING

Cyprus, an island in the eastern Mediterranean and a member state of the European Union, is full of pleasant surprises. Its mild and sunny climate, accessible location, natural beauty and local hospitality attract millions of visitors from around the world. Many become friends who visit regularly or even make Cyprus their second home.

Whether you like the island's sandy beaches or pine covered mountains, its food or its fun activities, its history or its culture, Cyprus invites you to enjoy a safe and welcoming environment among people who are known for their warmth and generosity. This is a country where family values are treasured; where age is respected and children are adored.

In this beautiful setting, Mediterranean and European lifestyles meet, and business and pleasure are never far apart, making Cyprus perfect for a balanced life of work and play.





## AYIA NAPA A MAGNETIC RESORT

In Cyprus, every district and every town has its special features and places of interest.

But to most holidaymakers, Cyprus is synonymous with Ayia Napa.

This seaside resort built around a Venetian monastery is a favourite destination for either an exciting summer break or a quiet winter escape from colder climates.

In fact, new tourism infrastructure is attracting a growing number of visitors, extending the main holiday season from early spring to late autumn.

Here, on the southeastern coast of the island, you will find a string of sandy bays that melt into the crystal clear, turquoise water. To complement the fun in the sun, Ayia Napa's entertainment options and nightlife follow the seasons, culminating in the summer. In cooler weather, the countryside and natural landscape of Cape Greco are the highlights of this area.





## CITY NAPA RESIDENCES

# LUXURY & LEISURE

In the heart of Ayia Napa, only a short walk from the monastery square and even closer to the sea, City Napa Residences are taking shape.

This new and gated development comprises only eight exclusive three-bedroom villas, offering its owners the privileges of a luxurious detached property in a central location. Make City Napa your home, and you can instantly alternate between the excitement of Ayia Napa and the quiet privacy of your own home.

Step outside and you will find everything you need and enjoy within walking distance: a sandy beach, water sports, a fun fair, shops and restaurants, banks and pharmacies, as well as entertainment hot spots, day and night.

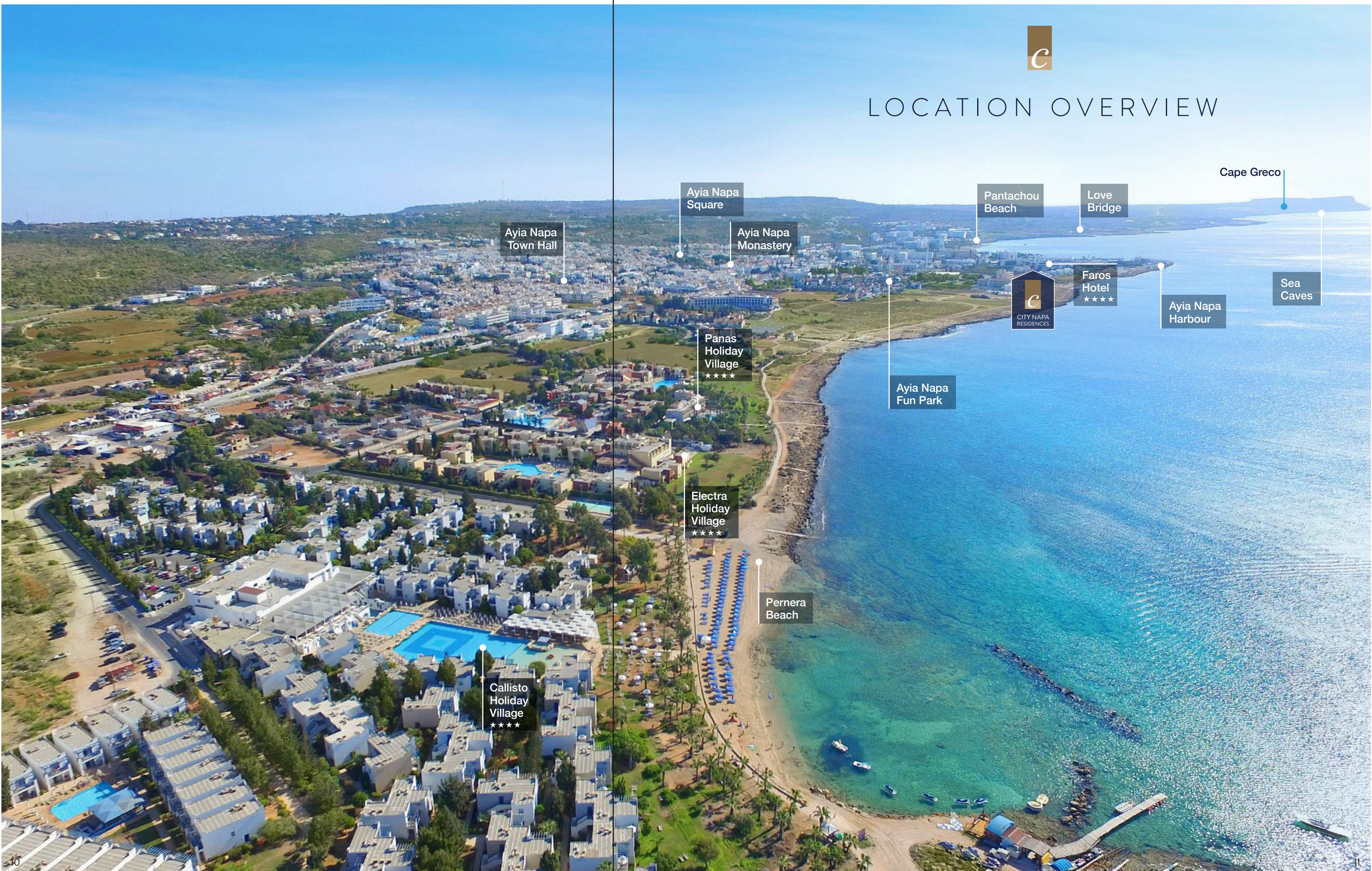


### Where you are

- ◆ A short walk from the golden sands of EU 'Blue Flag' beaches
- ◆ Minutes away from the centre of Ayia Napa
- ◆ 5-minute drive from Protaras and Cape Greco
- ◆ 30-minute drive from Larnaca International Airport



# LOCATION OVERVIEW



Ayia Napa  
Town Hall

Ayia Napa  
Square

Ayia Napa  
Monastery

Pantachou  
Beach

Love  
Bridge

Cape Greco

Sea  
Caves

Faros  
Hotel  
★★★★

Ayia Napa  
Harbour



Ayia Napa  
Fun Park

Panas  
Holiday  
Village  
★★★★

Electra  
Holiday  
Village  
★★★★★

Perneria  
Beach

Callisto  
Holiday  
Village  
★★★★★

PARALIMNI

TOWARDS  
PARALIMNI, DHERYNIA  
AND FAMAGUSTA

- Nearest beach: 200m
- Ayia Napa town centre: 0,5km
- Cape Greco nature park: 4km
- Access road to highway network: 50m
- Larnaca airport: 46km
- Nicosia: 75km
- Limassol: 90km
- Paphos: 145km



TOWARDS  
LARNACA  
AND LARNACA INTERNATIONAL AIRPORT

AYIA NAPA

Nissi Avenue

Ayia Napa  
Harbour

Nissi Beach

Pernera Beach

Love Bridge

Pantachou Beach

Landa Beach

Vathia Gonia Beach

Loukkos tou Mandi  
Beach

Makronissos Beach

Ammos Kampouri Beach

Limnara Beach

Cape Greco View Point

Cape Greco

Sea Caves

PROTARAS

Church of Profitis Ilias

Fig Tree Bay

Cavo Maris Beach

Konnos Beach

Agioi Anargyroi

The Blue Lagoon

CAPE GRECO  
NATIONAL  
FOREST PARK

# ACCESS AND SURROUNDINGS



## THE VILLAS



In terms of design and construction, the villas bring conceptual architecture to life, using sophisticated materials that are aligned with the island's climate, culture and lifestyle.

Six similar yet not identical designs create an exclusive development that makes the most of the site's location and orientation.

High-end interior and exterior finishing materials offer you a perfect combination of aesthetics and functionality.

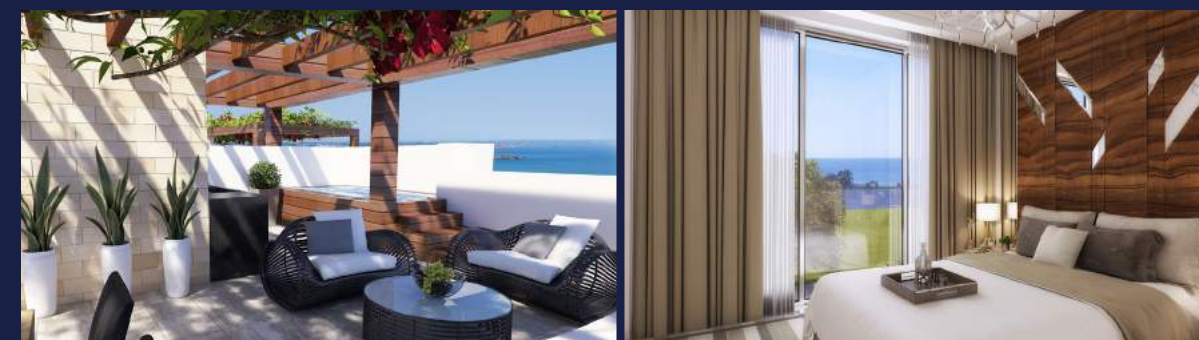
Modern installations guarantee all-round home comfort.

Every property is an example of relaxed and healthy living.

In addition to the living areas and kitchen on the ground floor, and the three bedrooms on the upper floor, the lower level is reserved for recreational space, home gym and jacuzzi.

A roof garden was created for amazing evenings under the stars.

To complete the picture, each villa is enhanced with its own private garden with pool and sunbathing deck, pergola covered barbecue area, and of course your private car park.







## LASTING VALUE

Examine every aspect of City Napa Residences and it will soon become clear that this is an investment opportunity with multiple benefits. From day one, a home in this luxurious development will welcome you for regular holidays in Ayia Napa and will be professionally managed and maintained in your absence.

Later in life, it will provide the perfect setting for comfortable retirement.

Alternatively, this is a property that can pay for itself by generating considerable rental income, thanks to its ideal location and superior specifications which appeal to the most discerning holidaymakers.

Whether for your own use or as a source of income, one thing is clear: as coastal properties are always desirable and their availability is continually shrinking, a home at City Napa Residences is a rare asset and an investment with promising returns, today and in the long term.

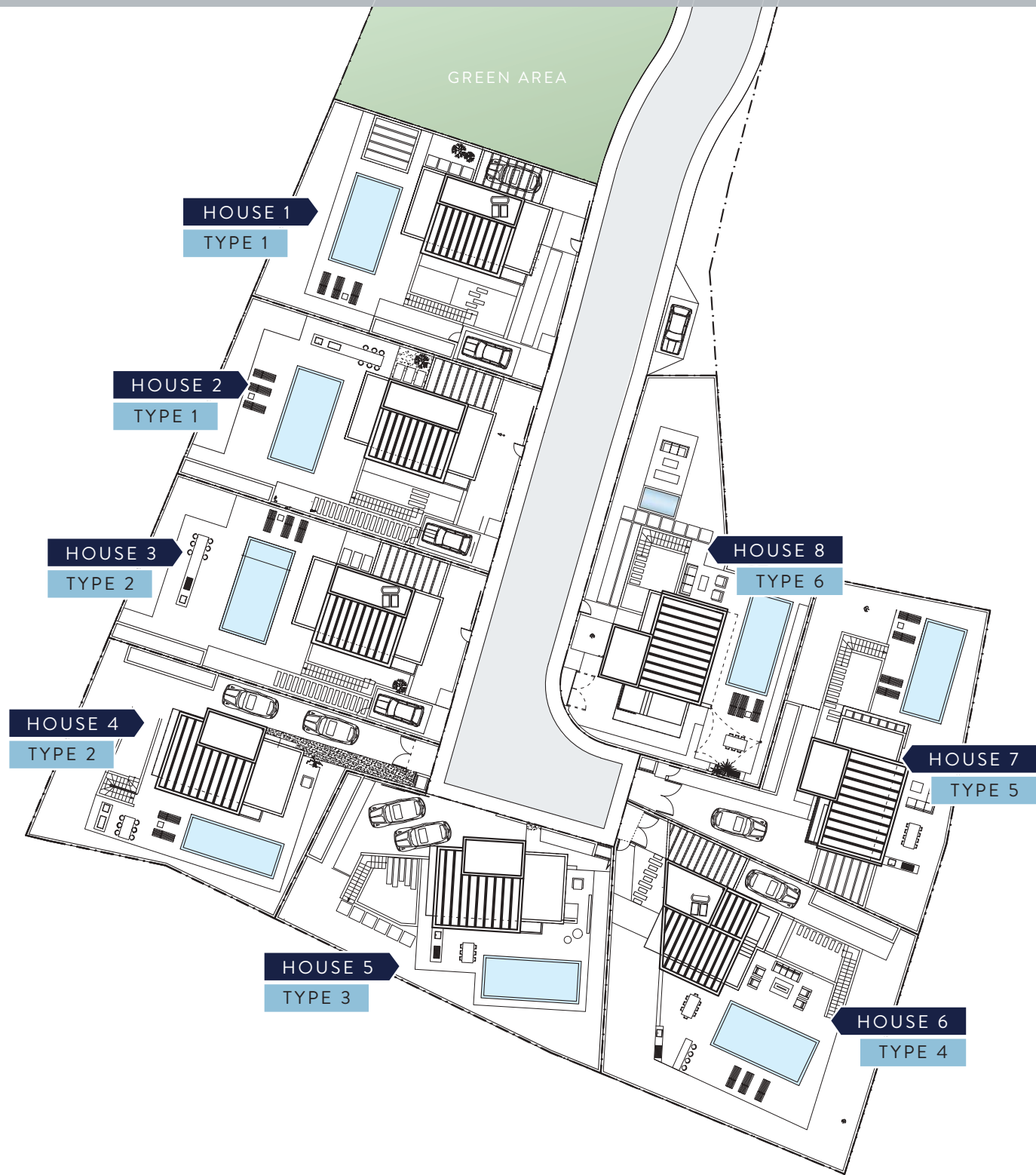


GATED AND SECURE





# SITE PLAN



# CITY NAPA RESIDENCES AT A GLANCE

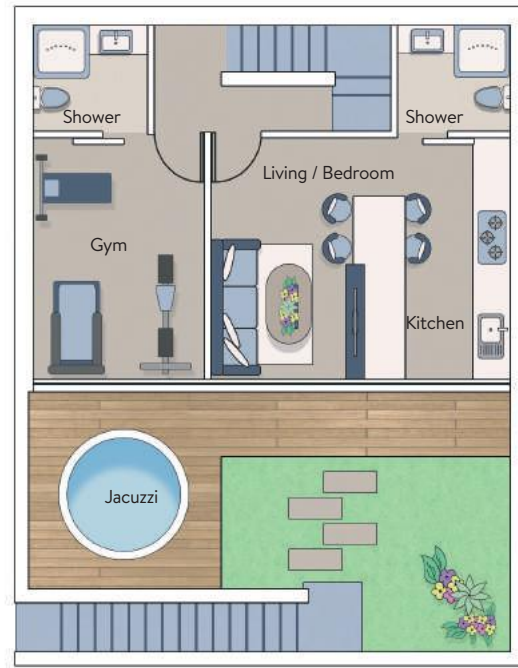




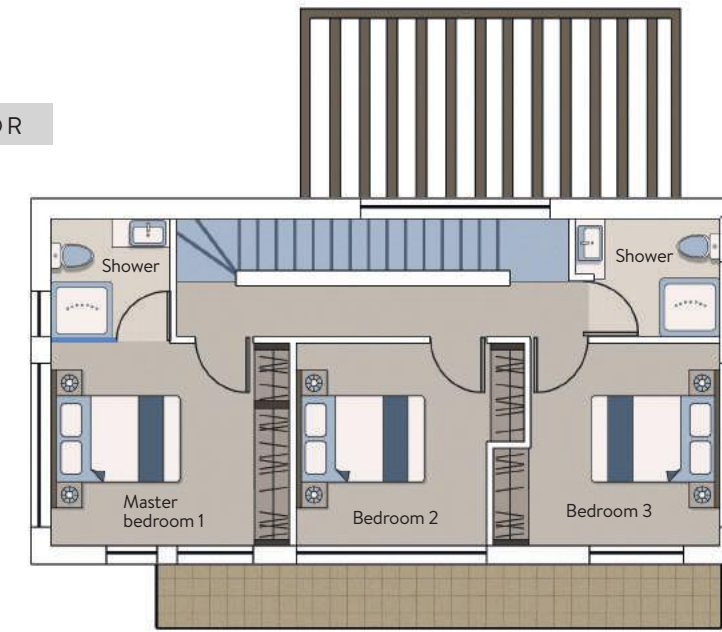
HOUSE 1  
TYPE 1



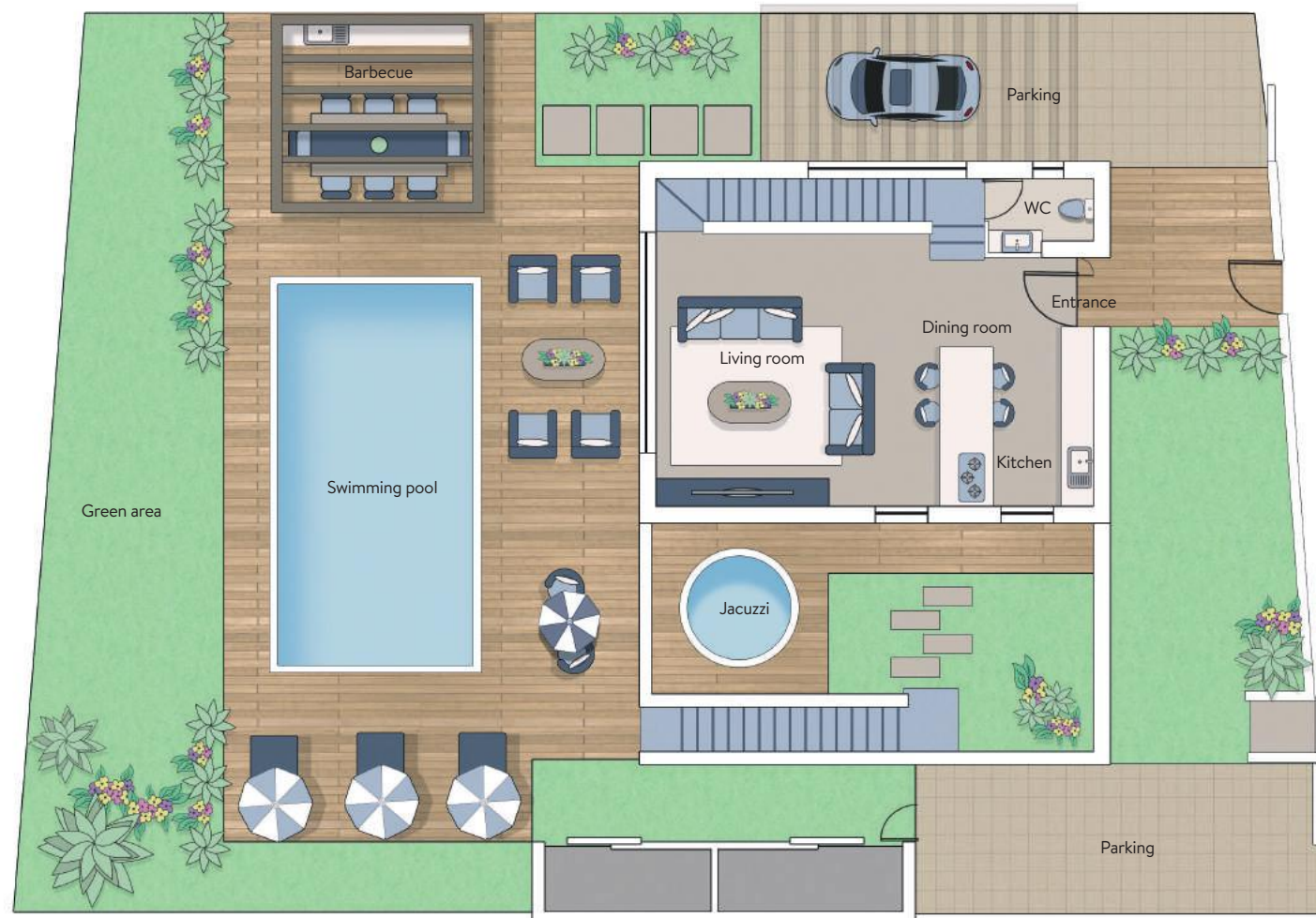
LOWER FLOOR



FIRST FLOOR



GROUND FLOOR



ROOF GARDEN



HOUSE 1

OVERALL DIMENSIONS

Plot area:	415m <sup>2</sup>
Lower floor:	61m <sup>2</sup>
Ground floor area:	60m <sup>2</sup>
First floor area:	65m <sup>2</sup>
Total house area:	186m <sup>2</sup>
Total covered verandas:	18.80m <sup>2</sup>
Total Uncovered verandas:	82.95m <sup>2</sup>
Parking area (uncovered):	34.40m <sup>2</sup>
Swimming pool:	30m <sup>2</sup> (7.50m x 4m)
Barbecue:	15m <sup>2</sup>
Boiler room:	3.90m <sup>2</sup>
Store:	4.80m <sup>2</sup>

LOWER FLOOR

Kitchen:	7.56m <sup>2</sup> (1.80m x 4.20m)
Dining room:	5.46m <sup>2</sup> (1.30m x 4.20m)
Living room:	8.82m <sup>2</sup> (2.10m x 4.20m)
Shower:	3.80m <sup>2</sup> (2.00m x 1.90m)
Gym:	12.60m <sup>2</sup> (3.00m x 4.20m)
Shower for gym:	3.80m <sup>2</sup> (2.00m x 1.90m)
Uncovered verandas:	16.25m <sup>2</sup> (including jacuzzi)

GROUND FLOOR

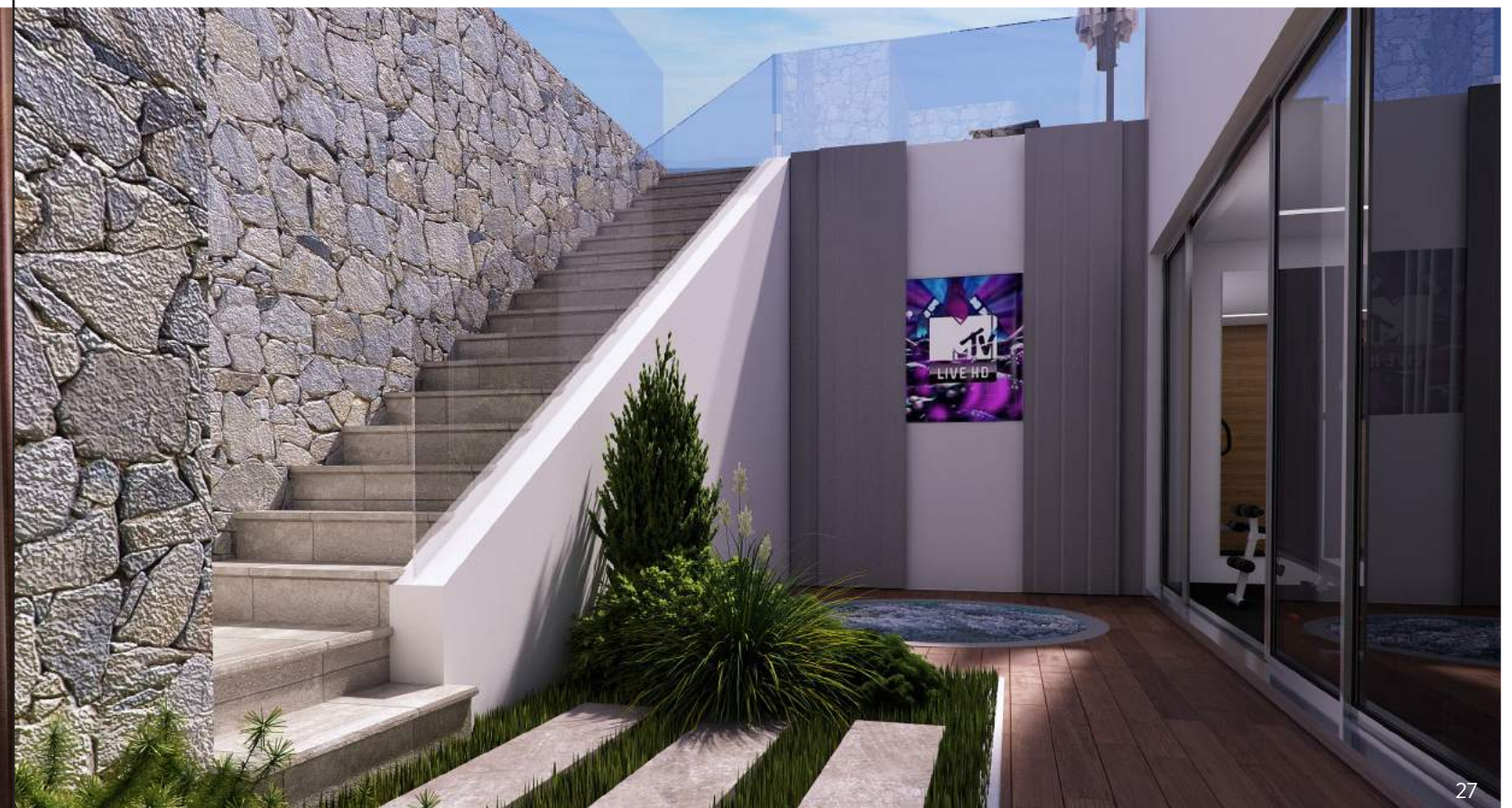
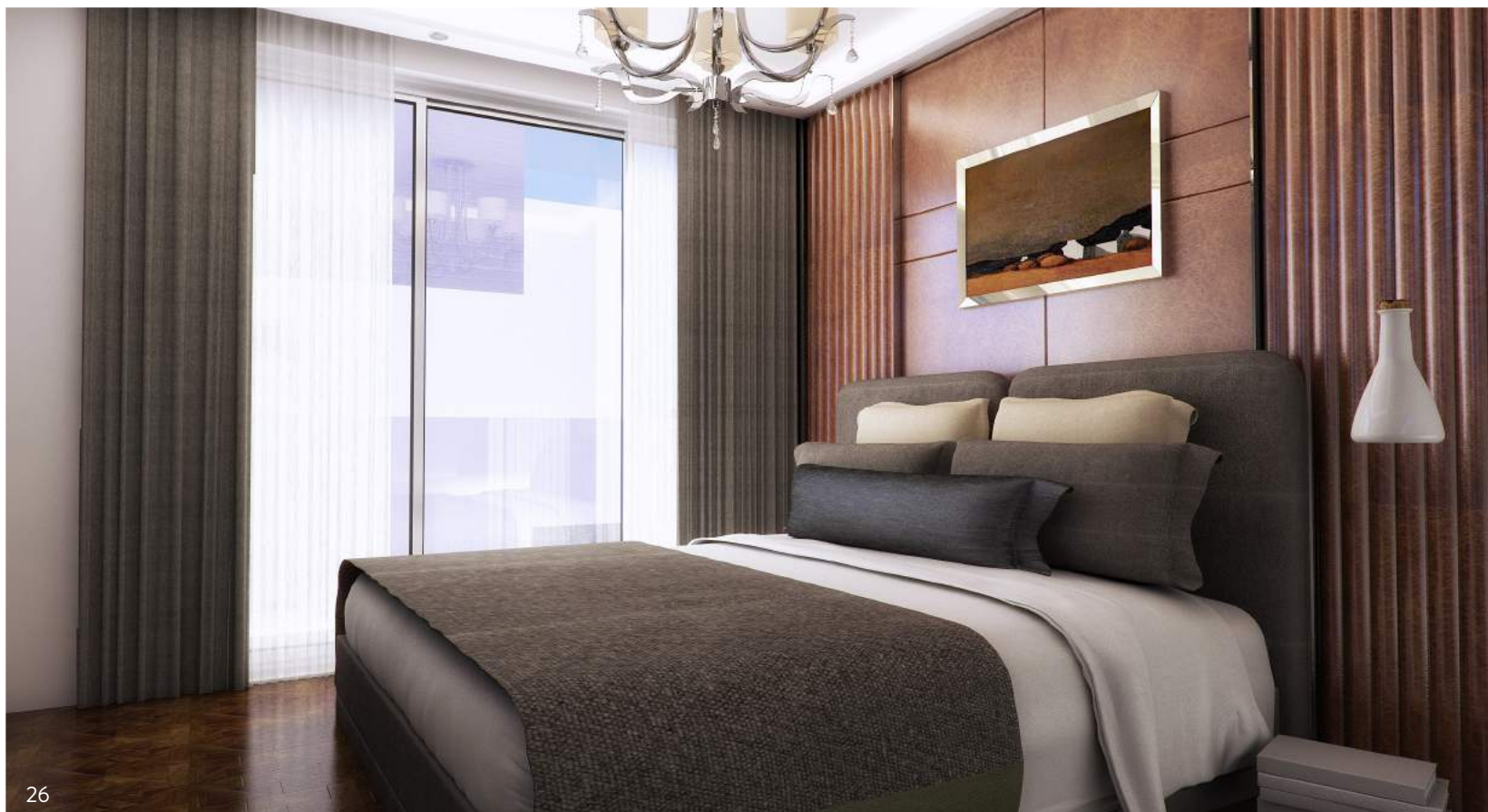
Kitchen:	6.60m <sup>2</sup> (3.30m x 2m)
Dining room:	7.70m <sup>2</sup> (3.50m x 2.20m)
Living room:	21.30m <sup>2</sup> (5.20m x 4.10m)
Guest WC:	2.40m <sup>2</sup> (1.20m x 2m)
Covered verandas:	12m <sup>2</sup>
Uncovered verandas:	64.50m <sup>2</sup>

FIRST FLOOR

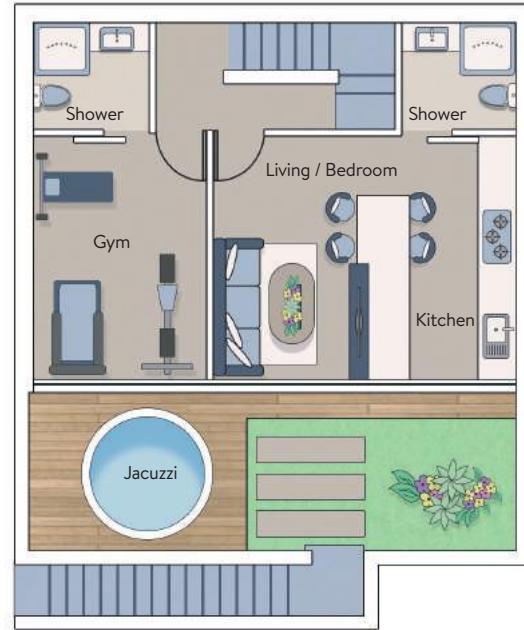
Master bedroom 1:	10.24m <sup>2</sup> (extra shower & wardrobe)
Bedroom 2:	9.60m <sup>2</sup> (extra wardrobe)
Bedroom 3:	9.60m <sup>2</sup> (extra wardrobe)
Shower:	4.30m <sup>2</sup>
Covered verandas:	6.80m <sup>2</sup>
Uncovered verandas:	2.20m <sup>2</sup>
Roof garden:	48m <sup>2</sup>



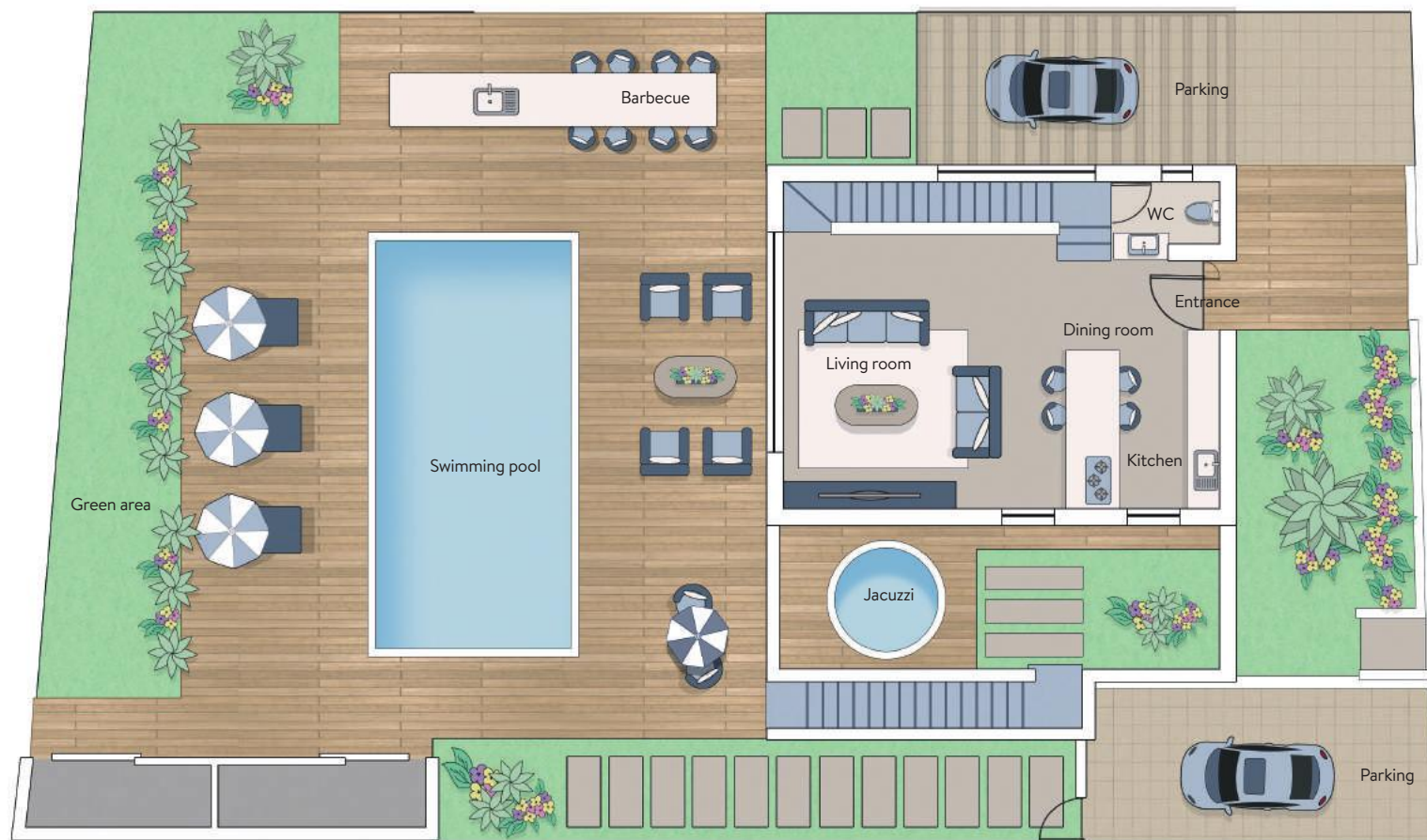
HOUSE 2  
TYPE 1



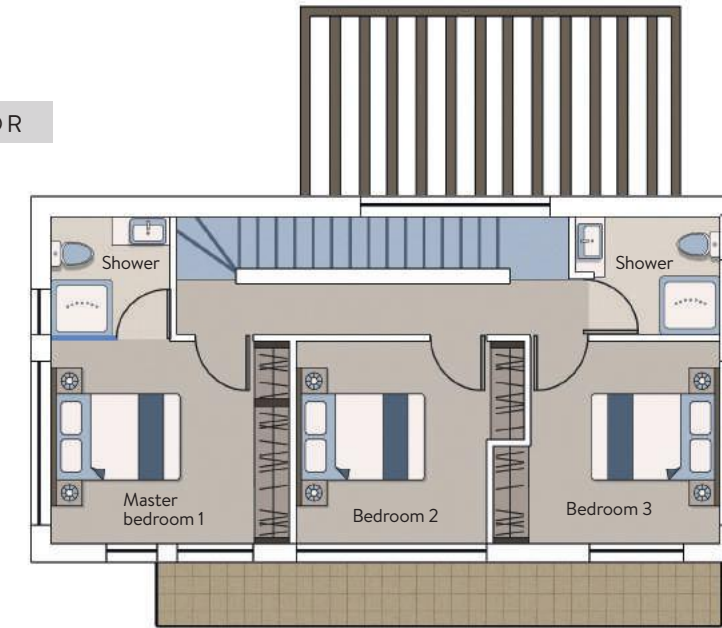
LOWER FLOOR



GROUND FLOOR



FIRST FLOOR



ROOF GARDEN



HOUSE 2

OVERALL DIMENSIONS

Plot area:	407m <sup>2</sup>
Lower floor:	61m <sup>2</sup>
Ground floor area:	60m <sup>2</sup>
First floor area:	65m <sup>2</sup>
Total house area:	186m <sup>2</sup>
Total covered verandas:	18.80m <sup>2</sup>
Total Uncovered verandas:	117.45m <sup>2</sup>
Parking area (uncovered):	34.40m <sup>2</sup>
Swimming pool:	32m <sup>2</sup> (8m x 4m)
Barbecue:	22.40m <sup>2</sup>
Boiler room:	4m <sup>2</sup>
Store:	5.70m <sup>2</sup>

LOWER FLOOR

Kitchen:	7.56m <sup>2</sup> (1.80m x 4.20m)
Dining room:	5.46m <sup>2</sup> (1.30m x 4.20m)
Living room:	8.82m <sup>2</sup> (2.10m x 4.20m)
Shower:	3.80m <sup>2</sup> (2.00m x 1.90m)
Gym:	12.60m <sup>2</sup> (3.00m x 4.20m)
Shower for gym:	3.80m <sup>2</sup> (2.00m x 1.90m)
Uncovered verandas:	16.25m <sup>2</sup> (including jacuzzi)

GROUND FLOOR

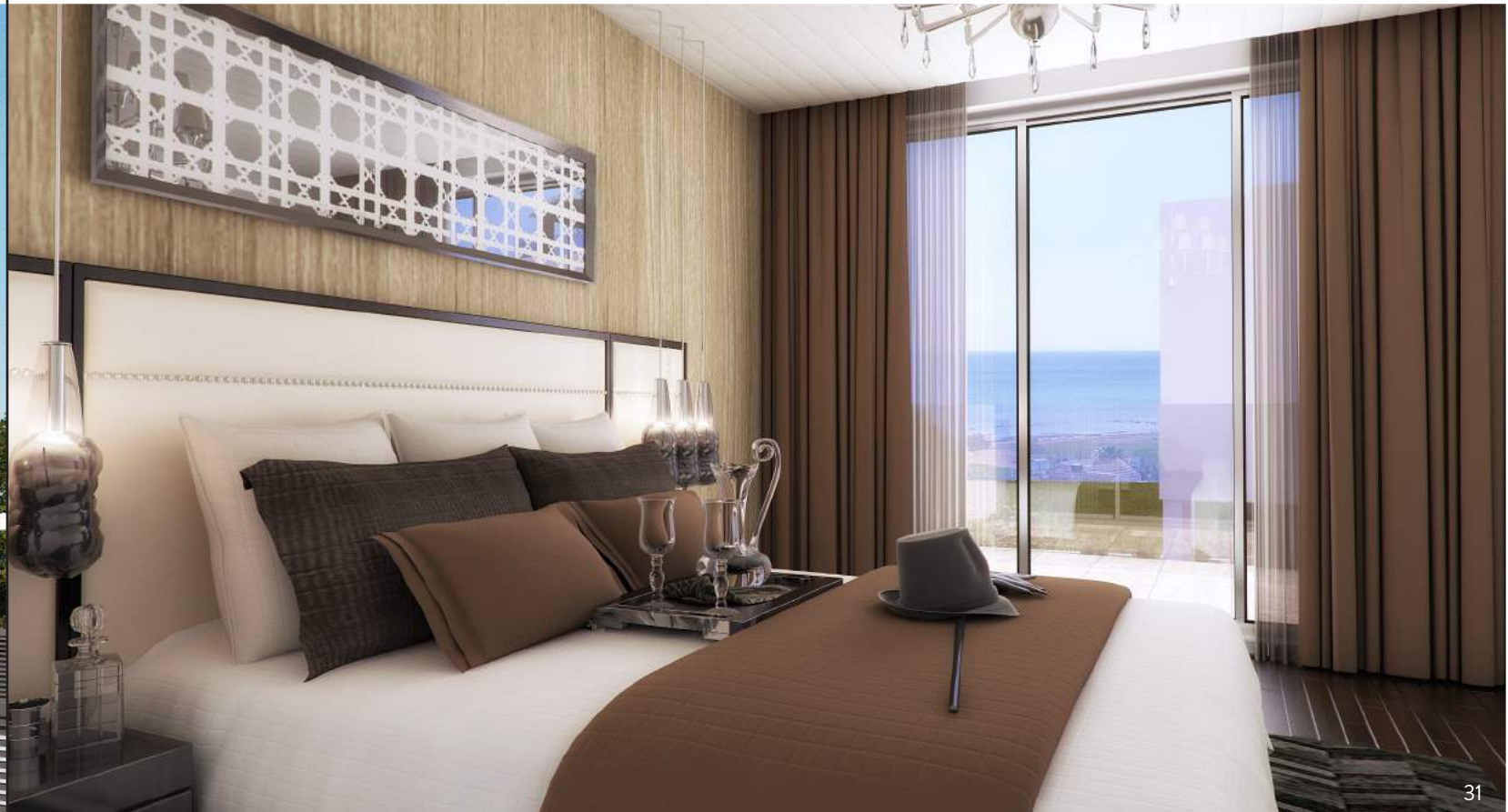
Kitchen:	6.60m <sup>2</sup> (3.30m x 2m)
Dining room:	7.70m <sup>2</sup> (3.50m x 2.20m)
Living room:	21.30m <sup>2</sup> (5.20m x 4.10m)
Guest WC:	2.40m <sup>2</sup> (1.20m x 2m)
Covered verandas:	12m <sup>2</sup>
Uncovered verandas:	99m <sup>2</sup>

FIRST FLOOR

Master bedroom 1:	10.24m <sup>2</sup> (extra shower & wardrobe)
Bedroom 2:	9.60m <sup>2</sup> (extra wardrobe)
Bedroom 3:	9.60m <sup>2</sup> (extra wardrobe)
Shower:	4.30m <sup>2</sup>
Covered verandas:	6.80m <sup>2</sup>
Uncovered verandas:	2.20m <sup>2</sup>
Roof garden:	48m <sup>2</sup>



HOUSE 3  
TYPE 2





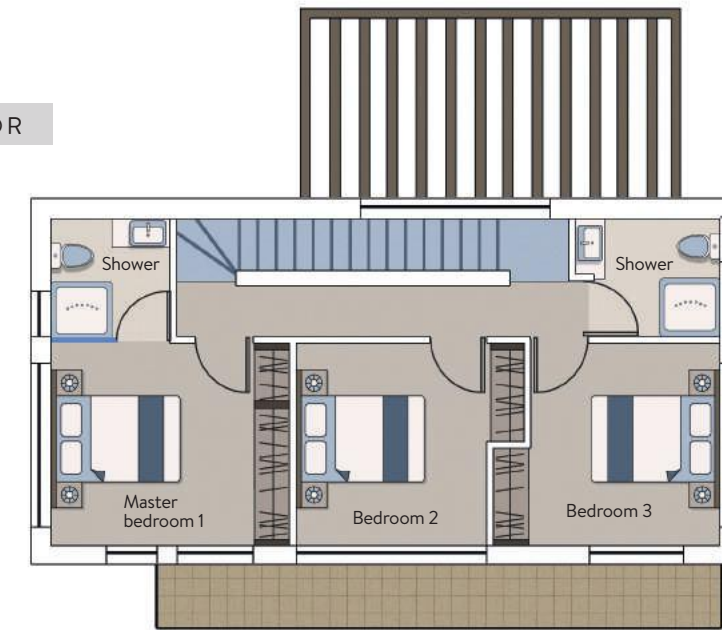
LOWER FLOOR



GROUND FLOOR



FIRST FLOOR



ROOF GARDEN



HOUSE 3

OVERALL DIMENSIONS

Plot area:	401m <sup>2</sup>
Lower floor:	59m <sup>2</sup>
Ground floor area:	60m <sup>2</sup>
First floor area:	65m <sup>2</sup>
Total house area:	184m <sup>2</sup>
Total covered verandas:	27.20m <sup>2</sup>
Total Uncovered verandas:	106m <sup>2</sup>
Parking area (uncovered):	34.40m <sup>2</sup>
Swimming pool:	32m <sup>2</sup> (8m x 4m)
Barbecue:	31m <sup>2</sup>
Boiler room:	4m <sup>2</sup>
Store:	5.70m <sup>2</sup>

LOWER FLOOR

Kitchen:	6.40m <sup>2</sup> (2.00m x 3.20m)
Dining room:	4.80m <sup>2</sup> (1.50m x 3.20m)
Living room:	8.48m <sup>2</sup> (2.65m x 3.20m)
Shower:	3.80m <sup>2</sup> (2.00m x 1.90m)
Gym:	12.80m <sup>2</sup> (3.20m x 4.00m)
Shower for gym:	3.80m <sup>2</sup> (2.00m x 1.90m)
Covered verandas:	8.40m <sup>2</sup>
Uncovered verandas:	5.80m <sup>2</sup> (including jacuzzi)

GROUND FLOOR

Kitchen:	6.60m <sup>2</sup> (3.30m x 2m)
Dining room:	7.70m <sup>2</sup> (3.50m x 2.20m)
Living room:	21.30m <sup>2</sup> (5.20m x 4.10m)
Guest WC:	2.40m <sup>2</sup> (1.20m x 2m)
Covered verandas:	12m <sup>2</sup>
Uncovered verandas:	98m <sup>2</sup>

FIRST FLOOR

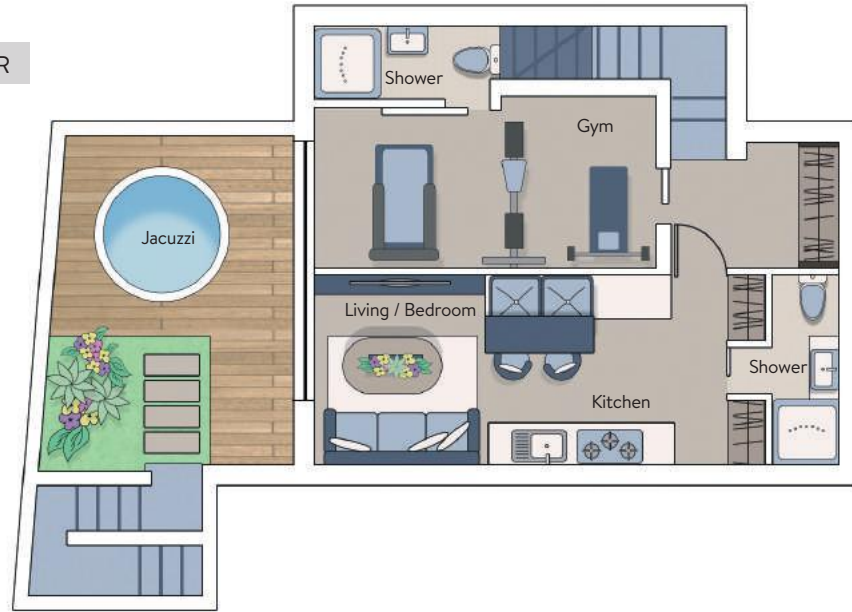
Master bedroom 1:	10.24m <sup>2</sup> (extra shower & wardrobe)
Bedroom 2:	9.60m <sup>2</sup> (extra wardrobe)
Bedroom 3:	9.60m <sup>2</sup> (extra wardrobe)
Shower:	4.30m <sup>2</sup>
Covered verandas:	6.80m <sup>2</sup>
Uncovered verandas:	2.20m <sup>2</sup>
Roof garden:	48m <sup>2</sup>



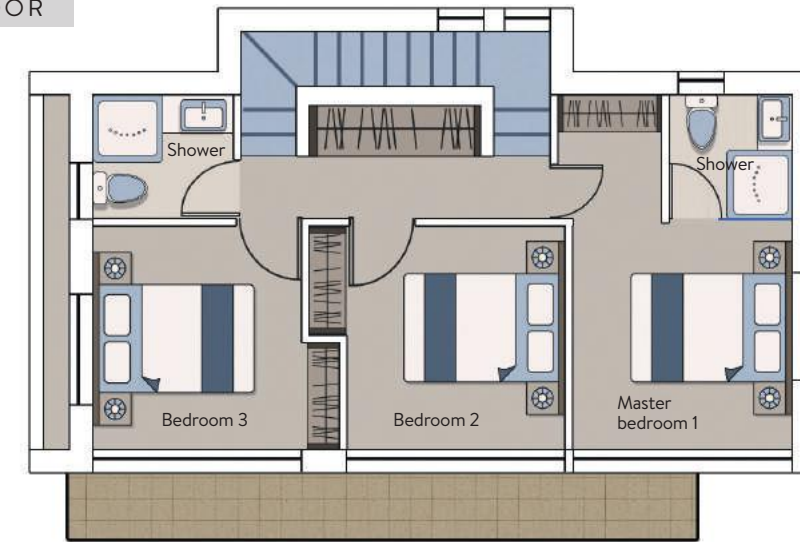
HOUSE 4  
TYPE 2



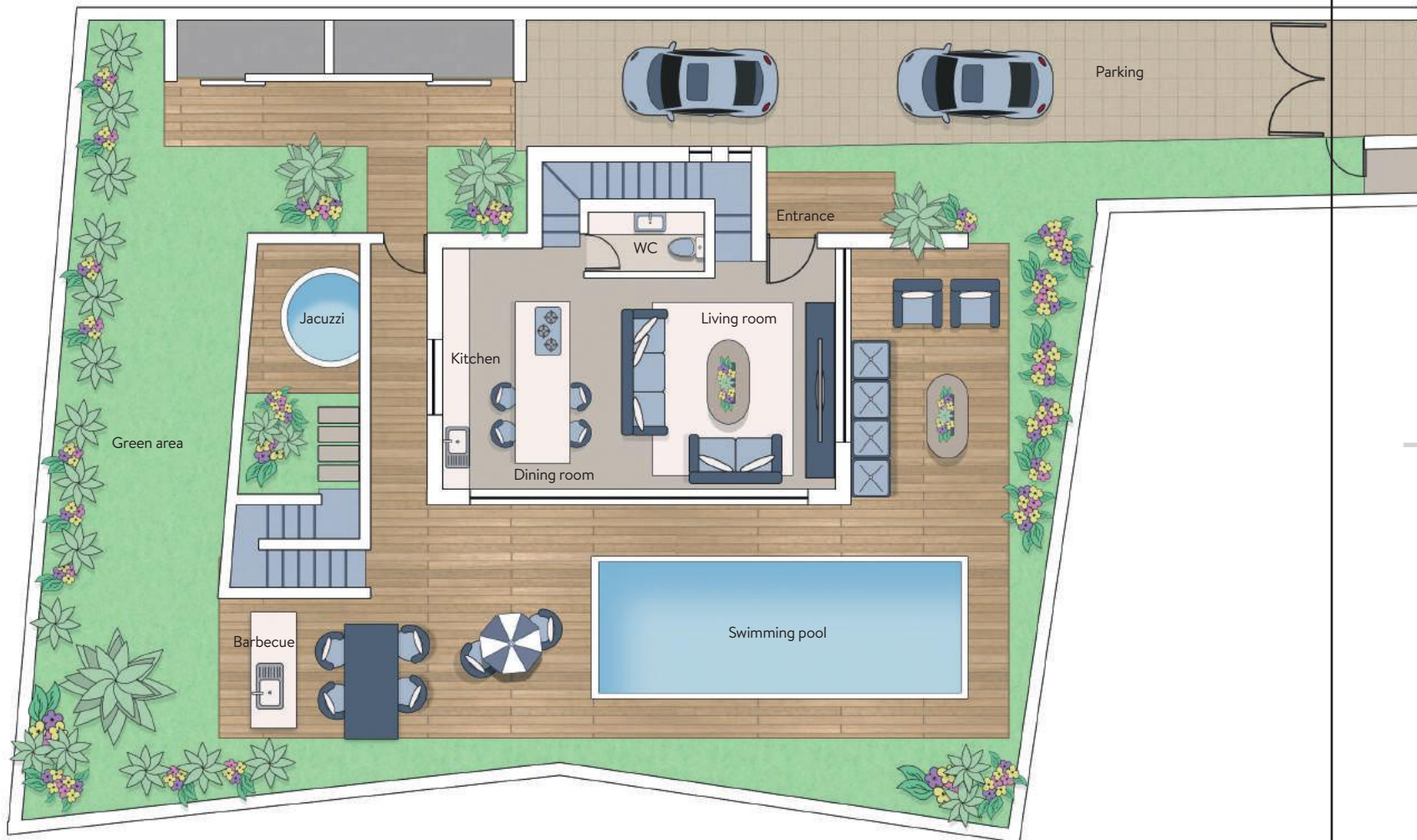
LOWER FLOOR



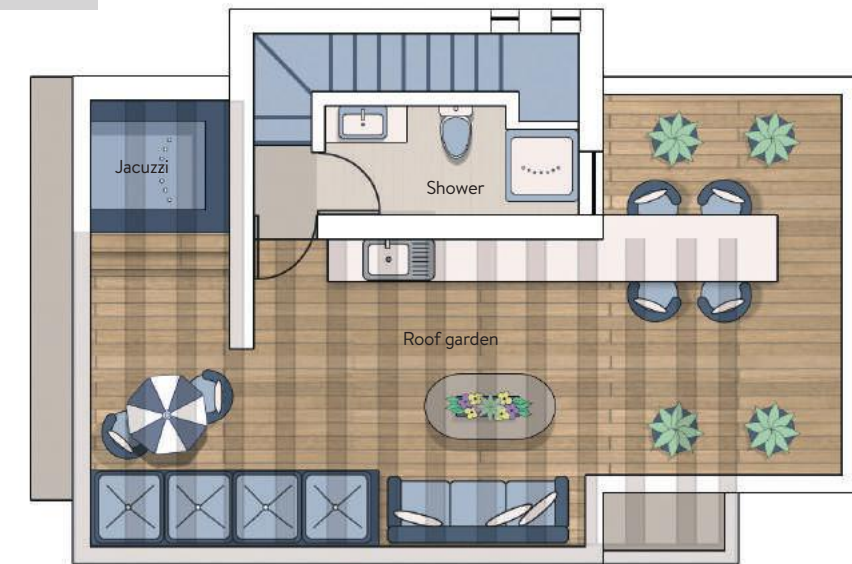
FIRST FLOOR



GROUND FLOOR



ROOF GARDEN



HOUSE 4

OVERALL DIMENSIONS

Plot area:	400m <sup>2</sup>
Lower floor:	59m <sup>2</sup>
Ground floor area:	61m <sup>2</sup>
First floor area:	65m <sup>2</sup>
Total house area:	186m <sup>2</sup>
Total covered verandas:	31.20m <sup>2</sup>
Total Uncovered verandas:	51.40m <sup>2</sup>
Parking area (uncovered):	38m <sup>2</sup>
Swimming pool:	24m <sup>2</sup> (8m x 3m)
Barbecue:	13m <sup>2</sup>
Boiler room:	3.90m <sup>2</sup>
Store:	5.20m <sup>2</sup>

LOWER FLOOR

Kitchen:	6.45m <sup>2</sup> (1.50m x 4.30m)
Dining room:	5.10m <sup>2</sup> (1.50m x 3.40m)
Living room :	8.70m <sup>2</sup> (2.65m x 3.20m)
Shower:	3.30m <sup>2</sup> (2.00m x 1.90m)
Gym:	15.25m <sup>2</sup> (3.20m x 4.00m)
Shower for gym:	3.20m <sup>2</sup> (2.00m x 1.90m)
Covered verandas:	7.35m <sup>2</sup>
Uncovered verandas:	5.80m <sup>2</sup> (including jacuzzi)
Store:	3.75m <sup>2</sup>

GROUND FLOOR

Kitchen:	9.27m <sup>2</sup> (5.15m x 1.80m)
Dining room:	10.12m <sup>2</sup> (2.25m x 4.55m)
Living room:	19.57m <sup>2</sup> (4.55m x 4.35m)
Guest WC:	2.40m <sup>2</sup> (1.20m x 2m)
Covered verandas:	17m <sup>2</sup>
Uncovered verandas:	44.50m <sup>2</sup>

FIRST FLOOR

Master bedroom 1:	10.50m <sup>2</sup> (extra shower & wardrobe)
Bedroom 2:	9.90m <sup>2</sup> (extra wardrobe)
Bedroom 3:	10.50m <sup>2</sup> (extra wardrobe)
Shower:	3.60m <sup>2</sup>
Covered verandas:	6.85m <sup>2</sup>
Uncovered verandas:	1.70m <sup>2</sup>
Roof garden:	57m <sup>2</sup>



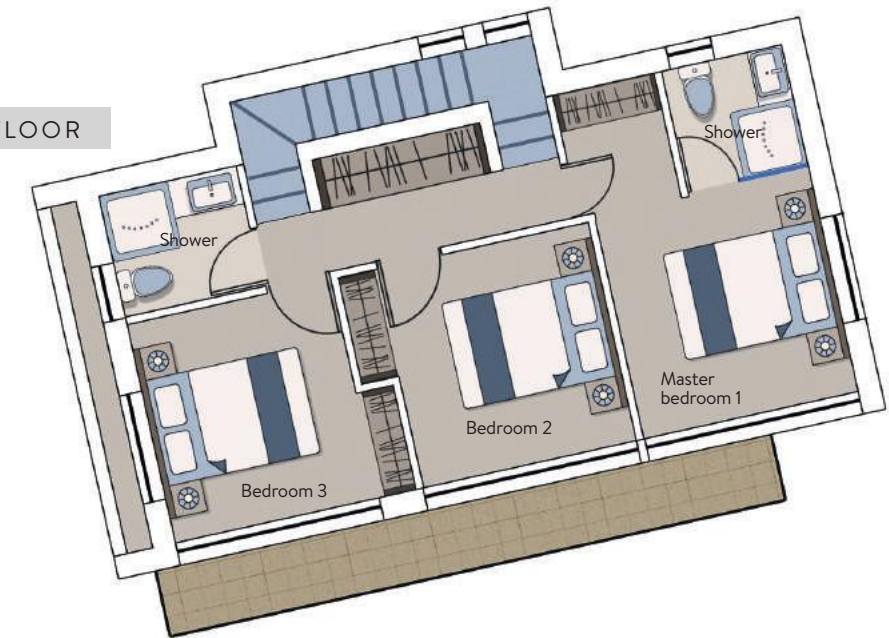
HOUSE 5  
TYPE 3



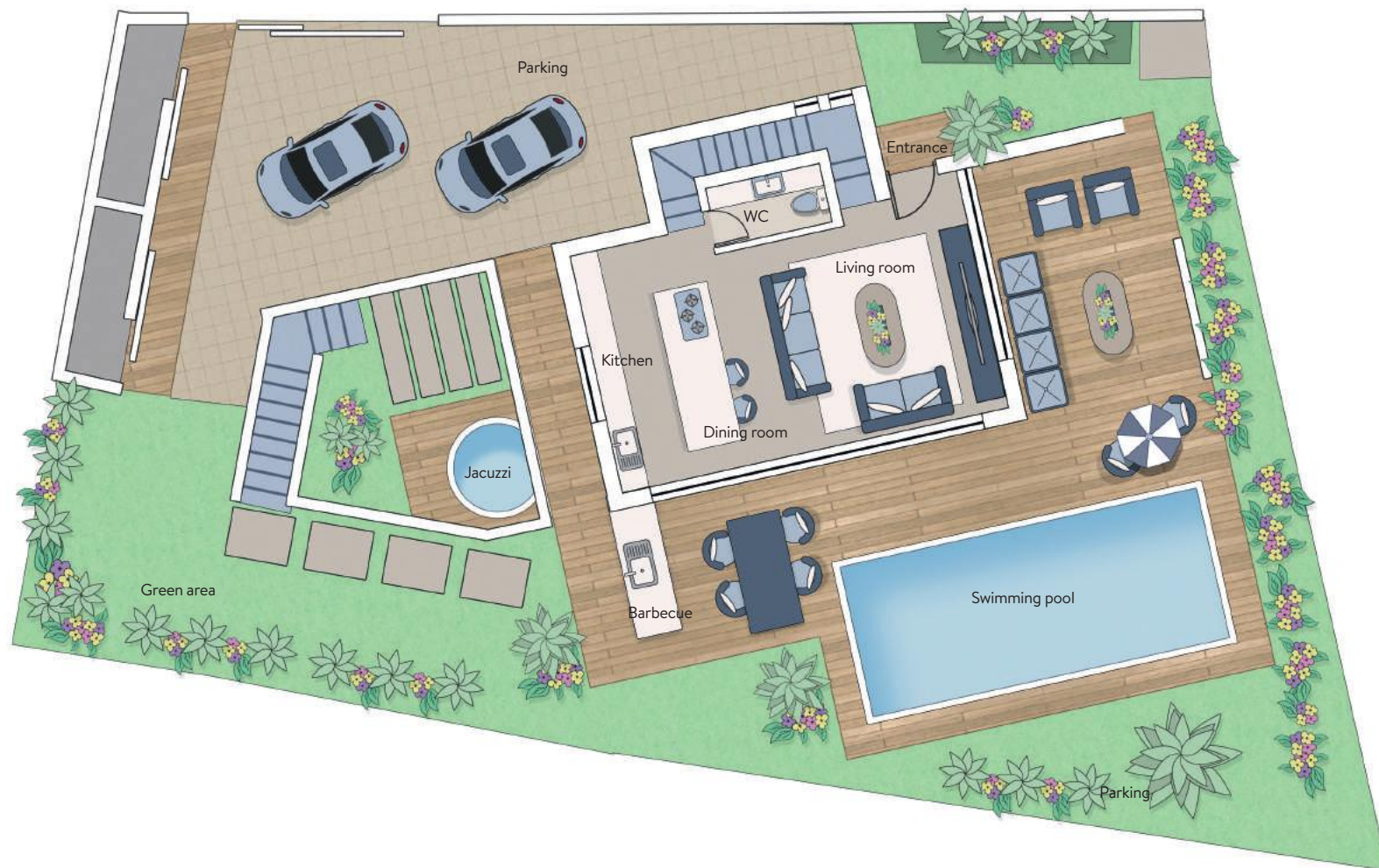
LOWER FLOOR



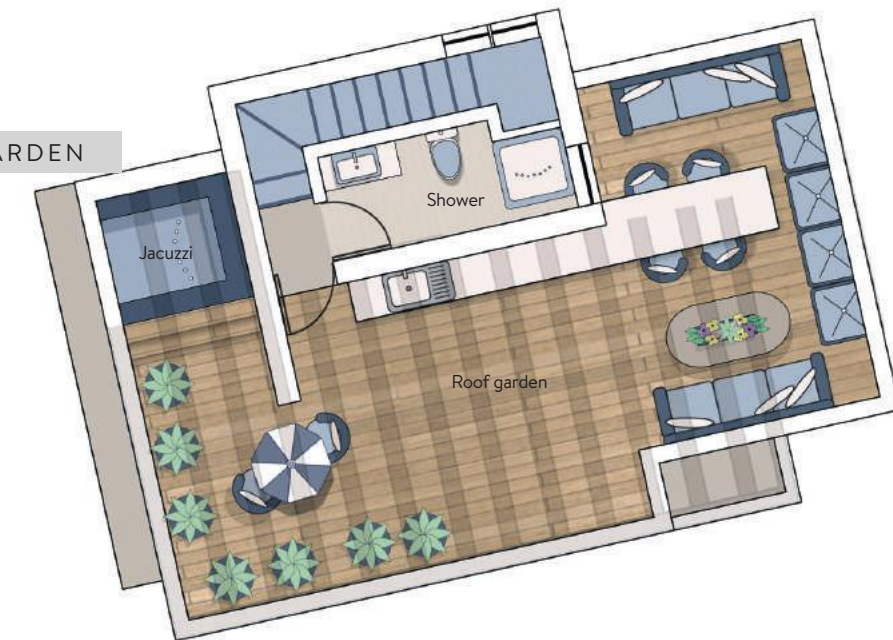
FIRST FLOOR



GROUND FLOOR



ROOF GARDEN



HOUSE 5

OVERALL DIMENSIONS

Plot area:	408m <sup>2</sup>
Lower floor:	65m <sup>2</sup>
Ground floor area:	61m <sup>2</sup>
First floor area:	65m <sup>2</sup>
Total house area:	192m <sup>2</sup>
Total covered verandas:	31.20m <sup>2</sup>
Total Uncovered verandas:	42.25m <sup>2</sup>
Parking area (uncovered):	45m <sup>2</sup>
Swimming pool:	28m <sup>2</sup> (8m x 3.50m)
Barbecue:	17.30m <sup>2</sup>
Boiler room:	3.90m <sup>2</sup>
Store:	5.20m <sup>2</sup>

LOWER FLOOR

Kitchen:	6.45m <sup>2</sup> (1.50m x 4.30m)
Dining room:	5.10m <sup>2</sup> (1.50m x 3.40m)
Living room :	8.70m <sup>2</sup> (2.65m x 3.20m)
Shower:	3.30m <sup>2</sup> (2.00m x 1.90m)
Gym:	15.25m <sup>2</sup> (3.20m x 4.00m)
Shower for gym:	3.20m <sup>2</sup> (2.00m x 1.90m)
Covered verandas:	7.35m <sup>2</sup>
Uncovered verandas:	6.55m <sup>2</sup> (including jacuzzi)
Store:	3.75m <sup>2</sup>

GROUND FLOOR

Kitchen:	9.27m <sup>2</sup> (5.15m x 1.80m)
Dining room:	10.12m <sup>2</sup> (2.25m x 4.55m)
Living room:	19.57m <sup>2</sup> (4.55m x 4.35m)
Guest WC:	2.40m <sup>2</sup> (1.20m x 2m)
Covered verandas:	17m <sup>2</sup>
Uncovered verandas:	34m <sup>2</sup>

FIRST FLOOR

Master bedroom 1:	10.50m <sup>2</sup> (extra shower & wardrobe)
Bedroom 2:	9.90m <sup>2</sup> (extra wardrobe)
Bedroom 3:	10.50m <sup>2</sup> (extra wardrobe)
Shower:	3.60m <sup>2</sup>
Covered verandas:	6.85m <sup>2</sup>
Uncovered verandas:	1.70m <sup>2</sup>
Roof garden:	57m <sup>2</sup>



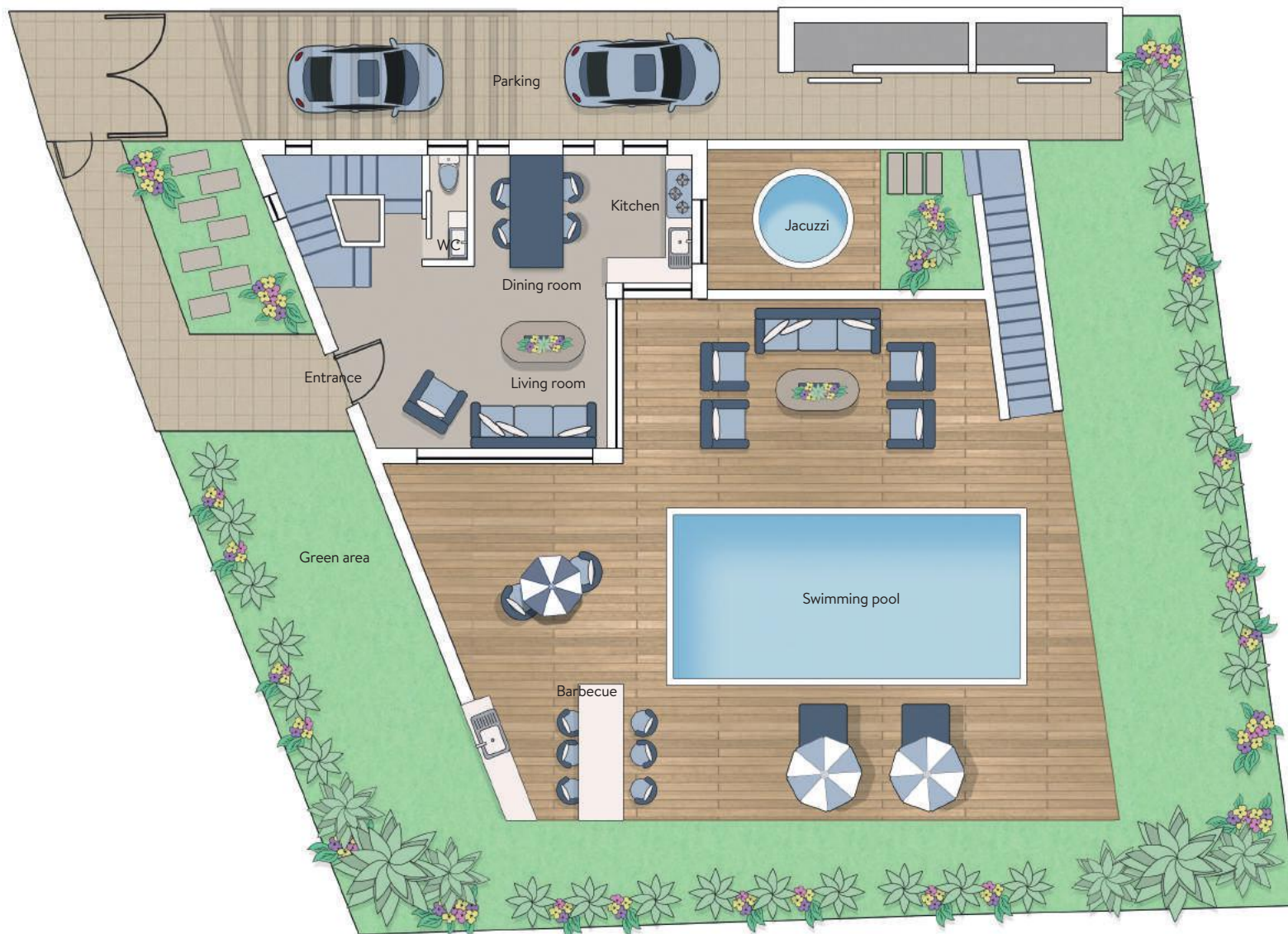
HOUSE 6  
TYPE 4



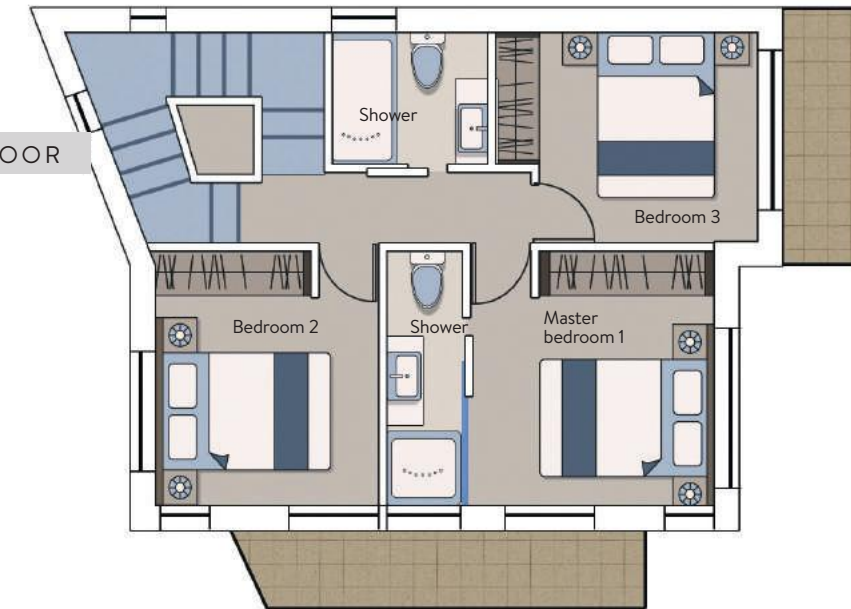
LOWER FLOOR



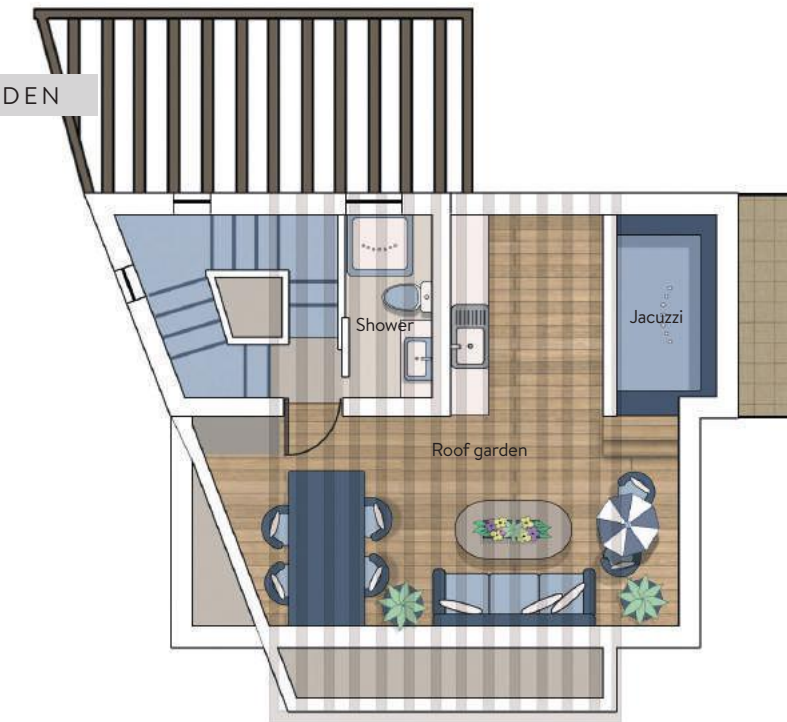
GROUND FLOOR



FIRST FLOOR



ROOF GARDEN



HOUSE 6

OVERALL DIMENSIONS

Plot area:	506m <sup>2</sup>
Lower floor:	65m <sup>2</sup>
Ground floor area:	59m <sup>2</sup>
First floor area:	67m <sup>2</sup>
Total house area:	191m <sup>2</sup>
Total covered verandas:	20m <sup>2</sup>
Total Uncovered verandas:	117.93m <sup>2</sup>
Parking area (uncovered):	38m <sup>2</sup>
Swimming pool:	32m <sup>2</sup> (8m x 4m)
Barbecue:	12m <sup>2</sup>
Boiler room:	3.90m <sup>2</sup>
Store:	4.80m <sup>2</sup>

LOWER FLOOR

Kitchen:	4.35m <sup>2</sup> (1.50m x 2.90m)
Dining room:	4.35m <sup>2</sup> (1.50m x 2.90m)
Living room:	6.90m <sup>2</sup> (2.30m x 3.00m)
Shower:	2.56m <sup>2</sup> (1.35m x 1.90m)
Gym:	13.60m <sup>2</sup> (3.40m x 4.00m)
Shower for gym:	4.32m <sup>2</sup> (2.40m x 1.80m)
Uncovered verandas:	12.35m <sup>2</sup> (including jacuzzi)
Store:	3.75m <sup>2</sup>

GROUND FLOOR

Kitchen:	6m <sup>2</sup> (3m x 3.10m)
Dining room:	10m <sup>2</sup> (3.30m x 3.05m)
Living room:	20.40m <sup>2</sup> (6m x 3.40m)
Guest WC:	2.40m <sup>2</sup> (1m x 2.40m)
Covered verandas:	14m <sup>2</sup>
Uncovered verandas:	101.58m <sup>2</sup>

FIRST FLOOR

Master bedroom 1:	10.50m <sup>2</sup> (extra shower & wardrobe)
Bedroom 2:	9.30m <sup>2</sup> (extra wardrobe)
Bedroom 3:	9.60m <sup>2</sup> (extra wardrobe)
Shower:	4m <sup>2</sup>
Covered verandas:	6m <sup>2</sup>
Uncovered verandas:	4m <sup>2</sup>
Roof garden:	49m <sup>2</sup>



HOUSE 7  
TYPE 5





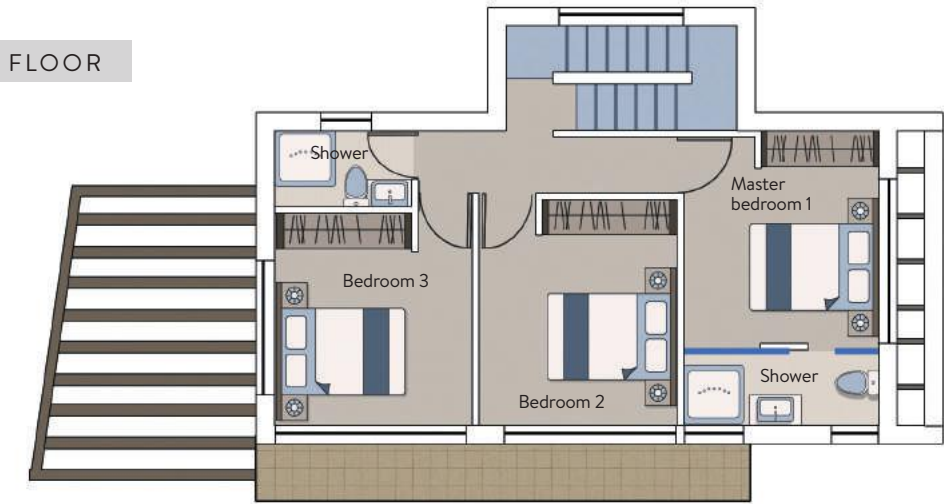
LOWER FLOOR



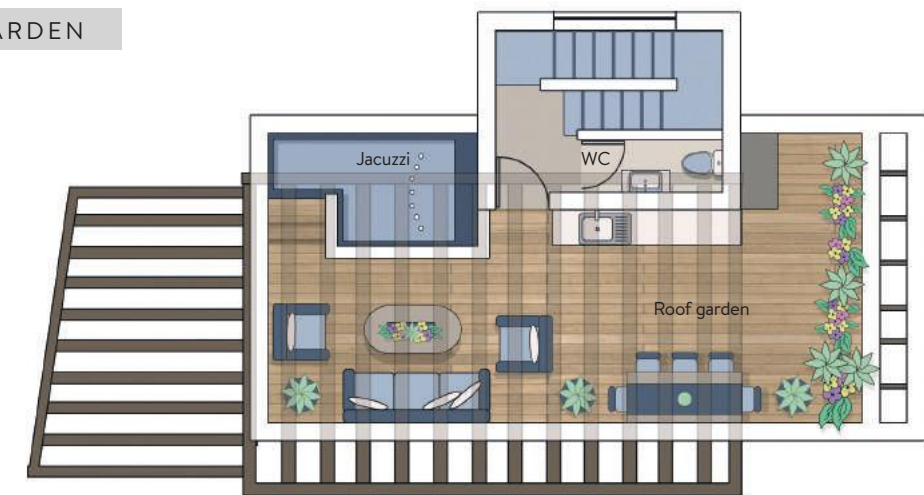
GROUND FLOOR



FIRST FLOOR



ROOF GARDEN



HOUSE 7

OVERALL DIMENSIONS

Plot area:	436m <sup>2</sup>
Lower floor:	60m <sup>2</sup>
Ground floor area:	58m <sup>2</sup>
First floor area:	68m <sup>2</sup>
Total house area:	186m <sup>2</sup>
Total covered verandas:	23.97m <sup>2</sup>
Total Uncovered verandas:	74.03m <sup>2</sup>
Parking area (uncovered):	37.80m <sup>2</sup>
Swimming pool:	28m <sup>2</sup> (8m x 3.50m)
Barbecue:	17m <sup>2</sup>
Boiler room:	3.90m <sup>2</sup>
Store:	5.20m <sup>2</sup>

LOWER FLOOR

Kitchen:	7.77m <sup>2</sup> (1.85m x 4.20m)
Dining room:	5.92m <sup>2</sup> (1.85m x 3.20m)
Living room:	6.72m <sup>2</sup> (2.10m x 3.20m)
Shower:	3.36m <sup>2</sup> (1.60m x 2.10m)
Gym:	10.73m <sup>2</sup> (3.70m x 2.90m)
Shower for gym:	2.90m <sup>2</sup> (2.90m x 1.00m)
Covered verandas:	6.97m <sup>2</sup>
Uncovered verandas:	5.63m <sup>2</sup> (including jacuzzi)

GROUND FLOOR

Kitchen:	8.55m <sup>2</sup> (4.75m x 1.80m)
Dining room:	8.55m <sup>2</sup> (4.75m x 1.80m)
Living room:	19.95m <sup>2</sup> (4.75m x 4.20m)
Guest WC:	2.90m <sup>2</sup> (1m x 2.90m)
Covered verandas:	17m <sup>2</sup>
Uncovered verandas:	60m <sup>2</sup>

FIRST FLOOR

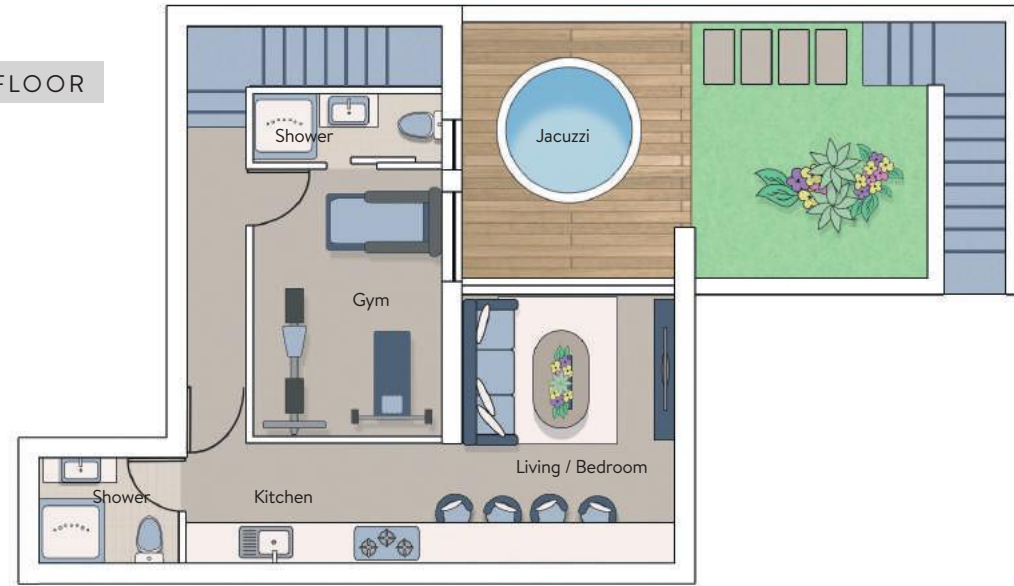
Master bedroom 1:	10.23m <sup>2</sup> (extra shower & wardrobe)
Bedroom 2:	10.56m <sup>2</sup> (extra wardrobe)
Bedroom 3:	10.20m <sup>2</sup> (extra wardrobe)
Shower:	2.90m <sup>2</sup>
Uncovered verandas:	8.40m <sup>2</sup>
Roof garden:	59m <sup>2</sup>



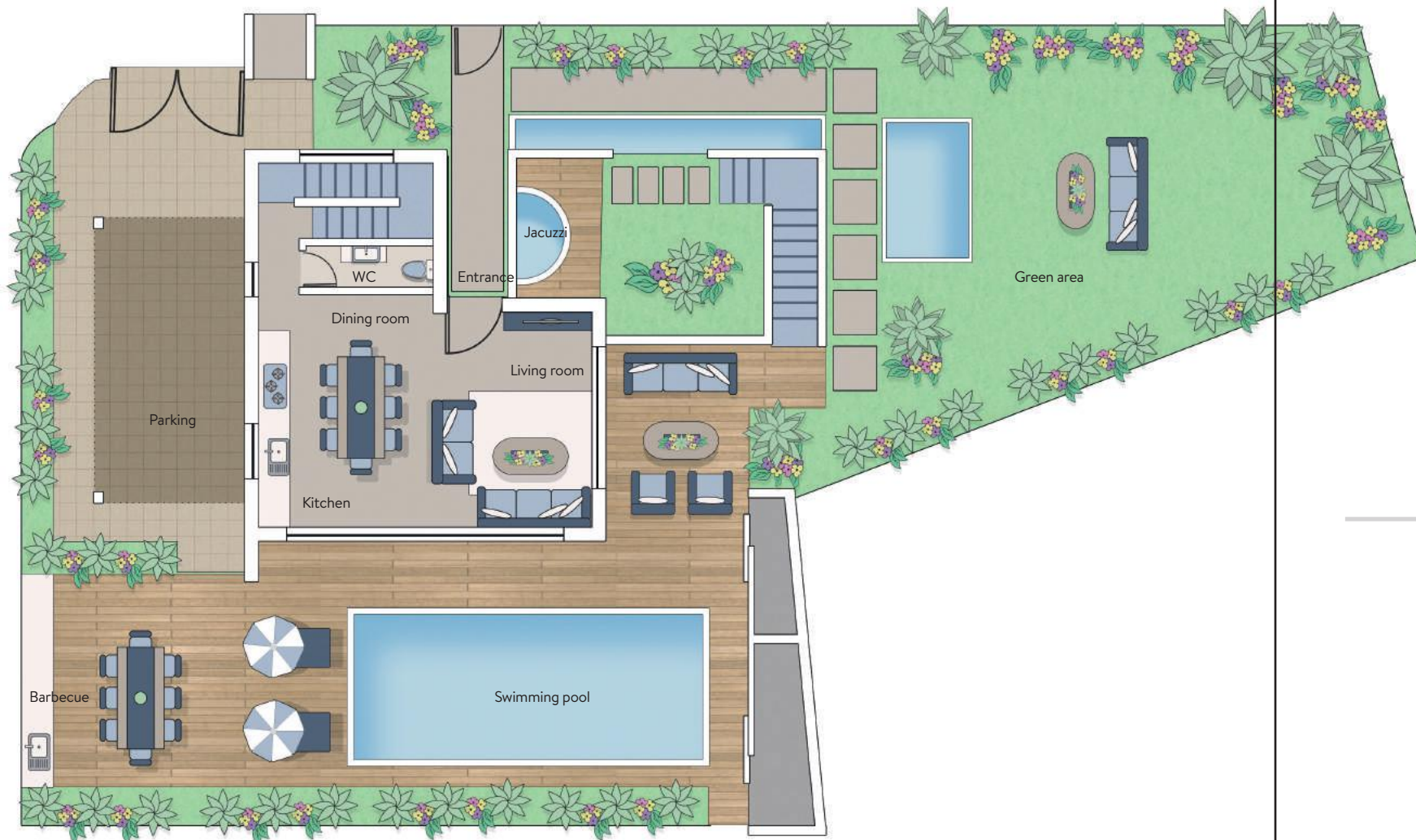
HOUSE 8  
TYPE 6



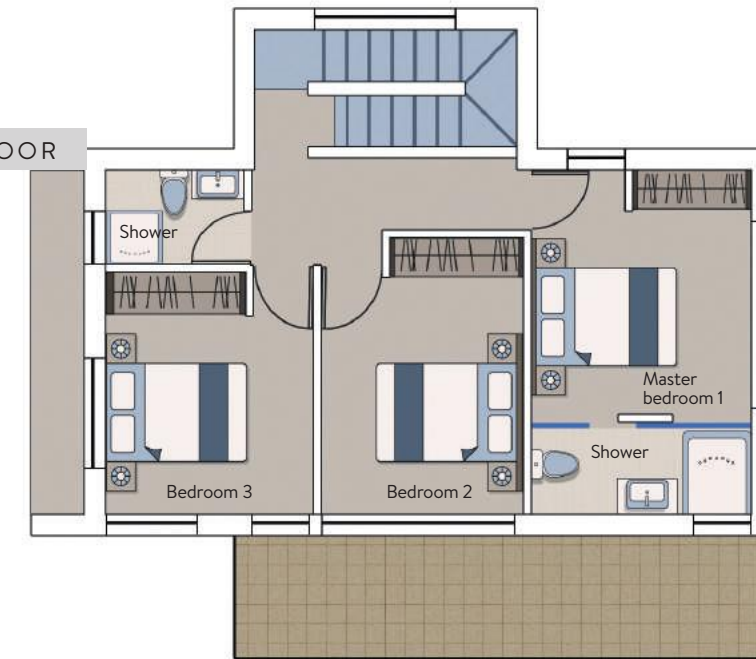
LOWER FLOOR



GROUND FLOOR



FIRST FLOOR



ROOF GARDEN



HOUSE 8

OVERALL DIMENSIONS

Plot area:	422m <sup>2</sup>
Lower floor:	60m <sup>2</sup>
Ground floor area:	58m <sup>2</sup>
First floor area:	68m <sup>2</sup>
Total house area:	186m <sup>2</sup>
Total covered veranda:	23.42m <sup>2</sup>
Total Uncovered verandas:	60.90m <sup>2</sup>
Parking area (covered):	17m <sup>2</sup>
Swimming pool:	28m <sup>2</sup> (8m x 3.50m)
Barbecue:	19.50m <sup>2</sup>
Boiler room:	3.10m <sup>2</sup>
Store:	5.30m <sup>2</sup>

LOWER FLOOR

Kitchen:	7.77m <sup>2</sup> (1.85m x 4.20m)
Dining room:	5.92m <sup>2</sup> (1.85m x 3.20m)
Living room:	6.72m <sup>2</sup> (2.10m x 3.20m)
Shower:	3.36m <sup>2</sup> (1.60m x 2.10m)
Gym:	10.73m <sup>2</sup> (3.70m x 2.90m)
Shower for gym:	2.90m <sup>2</sup> (2.90m x 1.00m)
Covered verandas:	7.22m <sup>2</sup>
Uncovered verandas:	6.20m <sup>2</sup> (including jacuzzi)

GROUND FLOOR

Kitchen:	9.36m <sup>2</sup> (5.20m x 1.80m)
Dining room:	10.40m <sup>2</sup> (5.20m x 2m)
Living room:	17.28m <sup>2</sup> (4.80m x 3.60m)
Guest WC:	2.70m <sup>2</sup> (0.90m x 3m)
Covered verandas:	9m <sup>2</sup>
Uncovered verandas:	47.50m <sup>2</sup>

FIRST FLOOR

Master bedroom 1:	10.54m <sup>2</sup> (extra shower & wardrobe)
Bedroom 2:	10.50m <sup>2</sup> (extra wardrobe)
Bedroom 3:	9.30m <sup>2</sup> (extra wardrobe)
Shower:	2.94m <sup>2</sup>
Covered verandas:	7.20m <sup>2</sup>
Uncovered verandas:	7.20m <sup>2</sup>
Roof garden:	59m <sup>2</sup>



CITY NAPA  
RESIDENCES



