

D O M U S

C O N T E M P O R A R Y L I V I N G



PAFOS

THE CITY OF BEAUTY

Pafos, a coastal city in the south west of Cyprus is the legendary birthplace of Aphrodite, the Goddess of love and beauty. Once the ancient capital of Cyprus, Pafos is Cyprus' most picturesque city and has been selected as the European Capital of Culture for 2017.



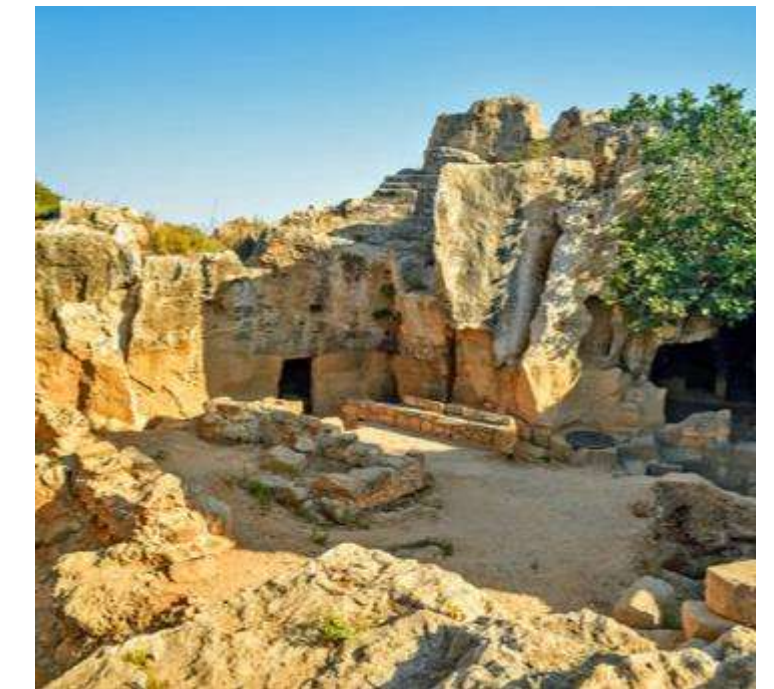
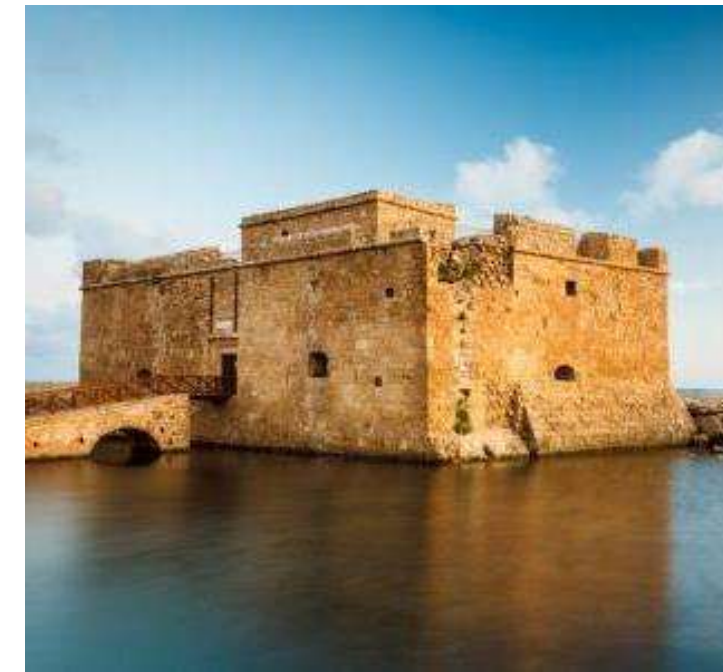
A Beautiful City

Pafos, with its charming harbour and medieval fort, offers cosmopolitan living, beautiful scenery and significant historical sites. It was the capital of Cyprus for 600 years in ancient times and its archaeological legacy is such that UNESCO put the whole town on its World Cultural Heritage list.

Pafos

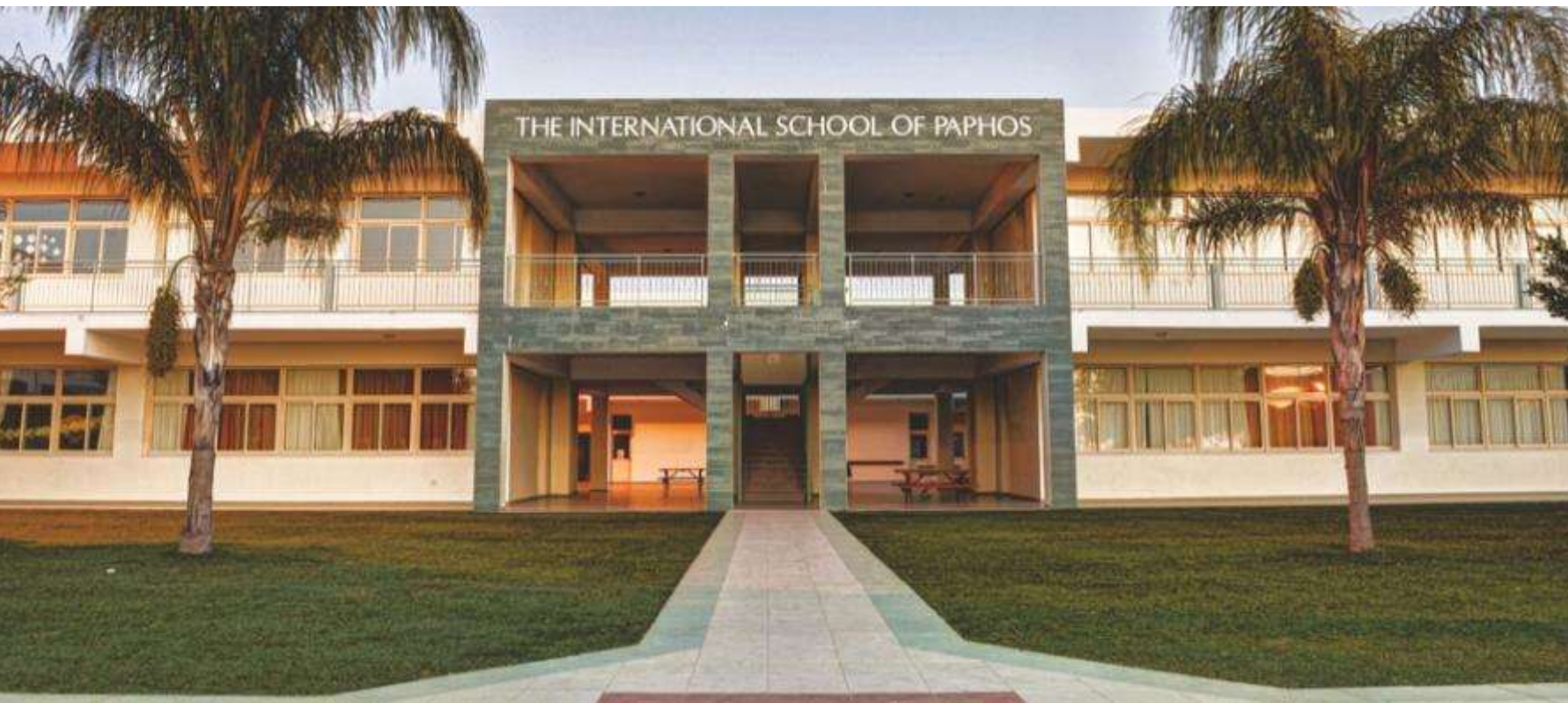
Pafos' historic city charm is complemented by a vast array of stunning beaches, perhaps the best on the island, an excellent selection of stylish cafes and restaurants, modern amenities, a buzzing nightlife and many interesting attractions. It is also home to Cyprus' national park, the Akamas.

- Harbour Castle
- Petra tou Romiou
- Archaeological Park
- Mosaics
- Tombs of the Kings
- Coral Bay
- Akamas
- Kings Avenue Mall
- Traditional Villages



Private Schools

ENGLISH PRIVATE SCHOOLS IN PAFOS



The private schools offer a well balanced education based on the English National Curriculum.

DOMUS

CONTEMPORARY LIVING








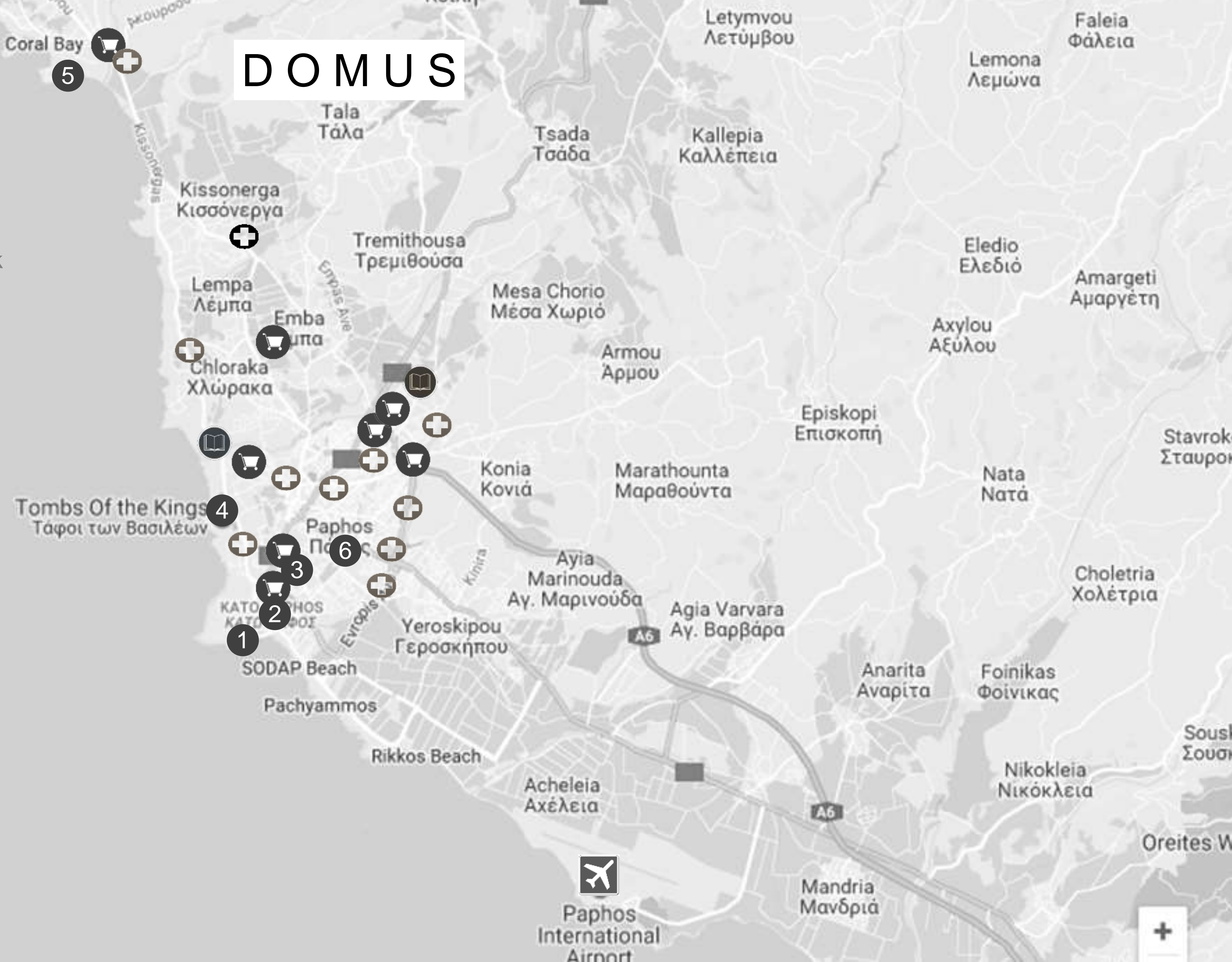
Domus is a stylish development that comprises 59 properties; spacious 1 and 2 bedroom apartments with large verandas and open-plan 3-bedroom penthouse suites. In addition, this development also offers 10 beautiful 2-bedroom town houses.

DOMUS

PLACES OF INTEREST

1. Pafos Castle
2. Kato Pafos Archeological Park
3. Paphos Mosaics
4. Tomb of the Kings
5. Coral Bay
6. Town Centre 8km

-  Private Schools
 - International School 6km
 - Aspire School 8km
-  Supermarkets
-  Hospitals
-  Paphos Airport 24km
-  Larnaca Airport 138km





Tala Village Square

Tala is a traditional Cypriot village centered around a village square which is surrounded by paved pedestrian areas and friendly local coffee shops, taverns, restaurants, bars and amenities.







Lifestyle



Tala Amphitheatre hosts many plays, shows and events, especially during the summer months. It has spectacular views of the coastline which are a magnificent back drop to any production. There is also a bar/ restaurant on site and children's playground.



Saint Neophytos Monastery

Saint Neophytos Monastery lies 2.3km from Tala village, it is one of Pafos' landmark sites



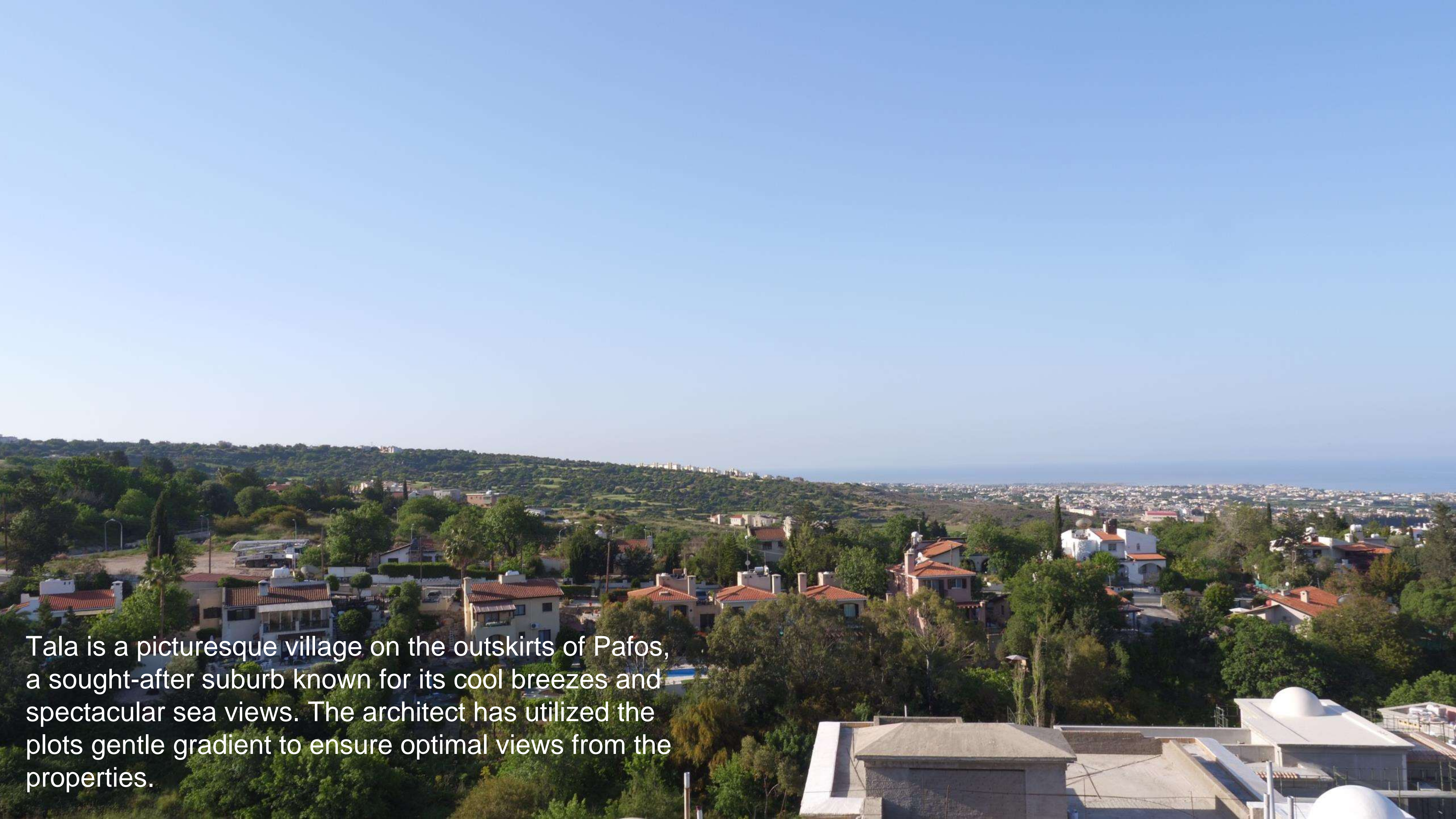
Minthis

Just a 9.4 km drive away is Minthis championship golf course



Adonis Baths Waterfalls

Adonis Baths, with its two level waterfall, is a beautiful little paradise which is really worth visiting, only 6.9km from Tala village.



Tala is a picturesque village on the outskirts of Pafos, a sought-after suburb known for its cool breezes and spectacular sea views. The architect has utilized the plots gentle gradient to ensure optimal views from the properties.

Domus enjoys traditional Cypriot architecture characterised by domed roofs, terracotta tiles and stone detail.



Construction progress







SITE PLAN





APARTMENTS

1, 2 & 3 BEDROOMS

TOTAL COVERED AREA FROM 58 - 140 M²



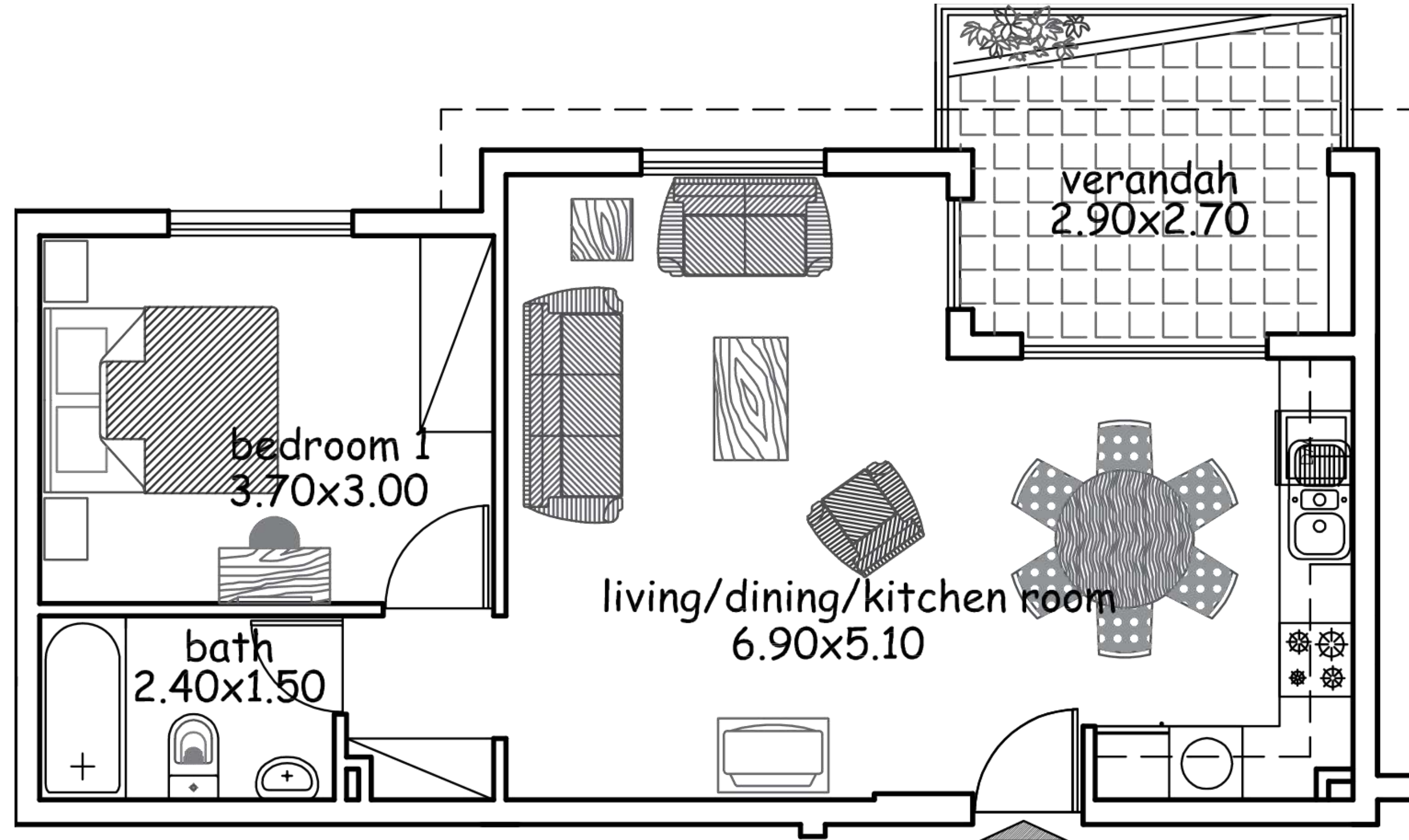






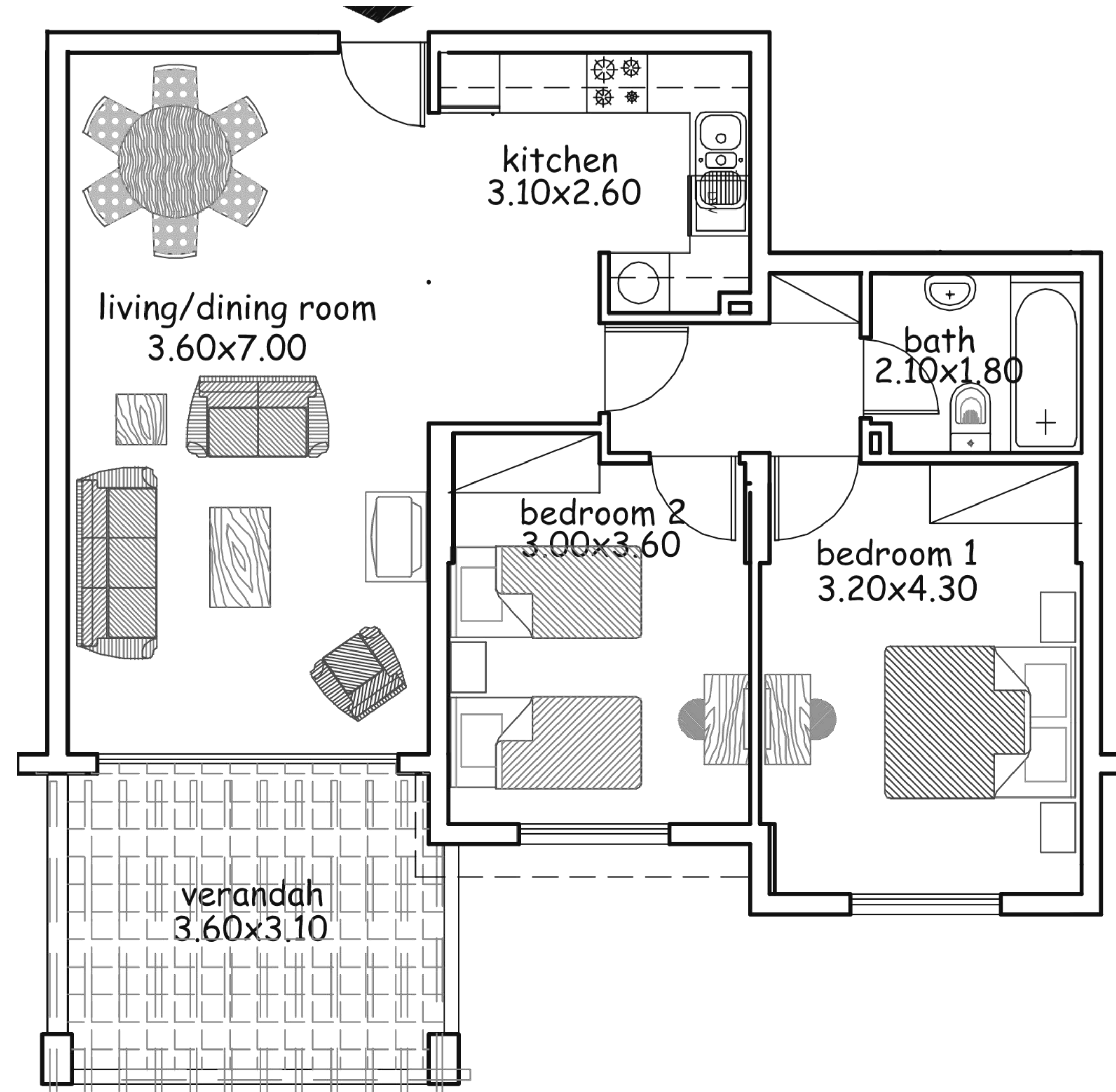
SAMPLE ONE BEDROOM APARTMENT

TOTAL COVERED AREA FROM 58 – 75 m²



SAMPLE TWO BEDROOM APARTMENT

TOTAL COVERED AREA FROM 76 – 124 m²



TOWNHOUSES

2 BEDROOM

TOTAL COVERED AREA FROM 93 - 123 M²







1888
4+
Made in Italy

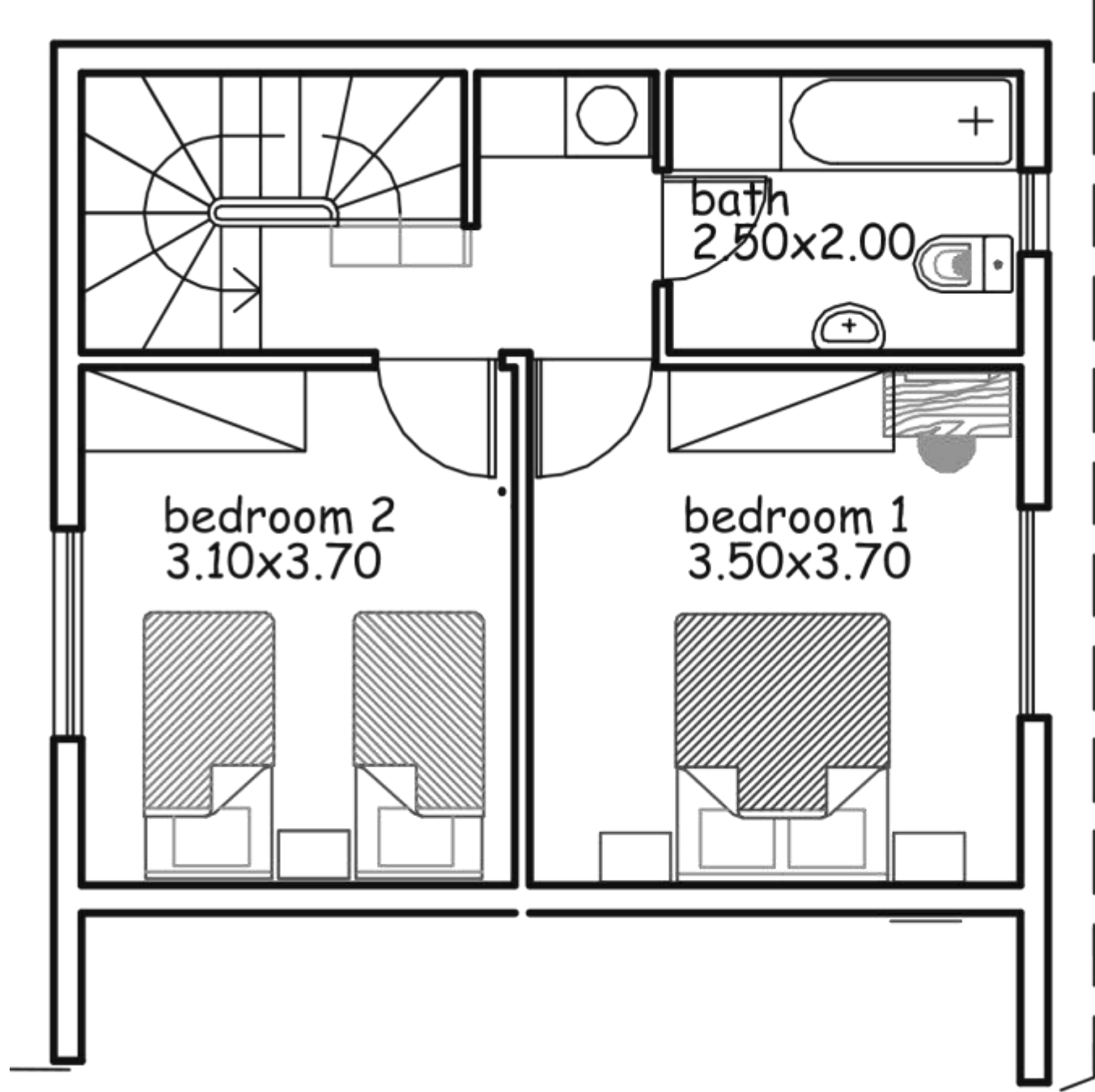
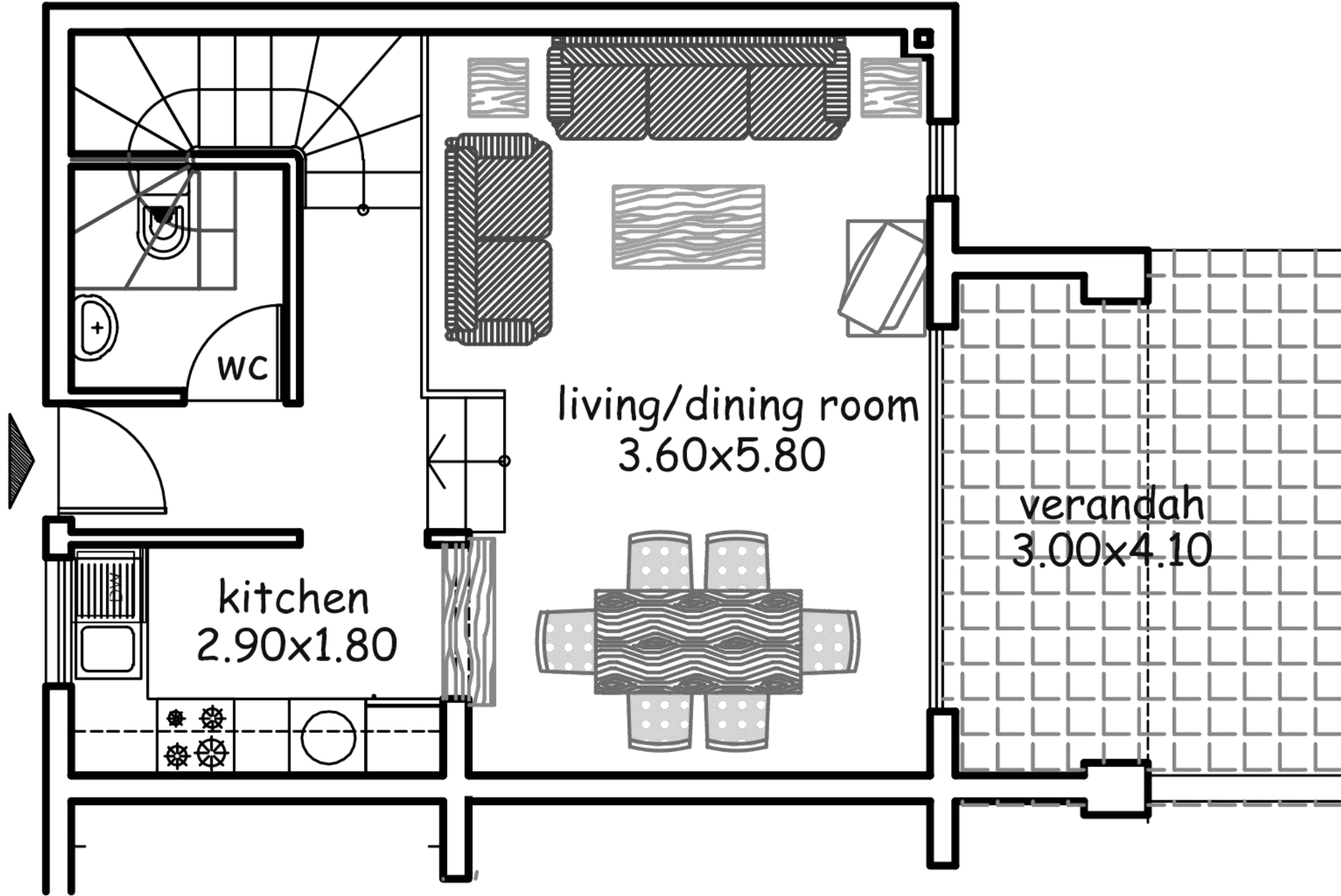
PITSOS





SAMPLE TWO BEDROOM TOWNHOUSE

TOTAL COVERED AREA FROM 93 – 123 m²



PENTHOUSES

3 & 4 BEDROOMS

TOTAL COVERED AREA FROM 156 - 315 M²



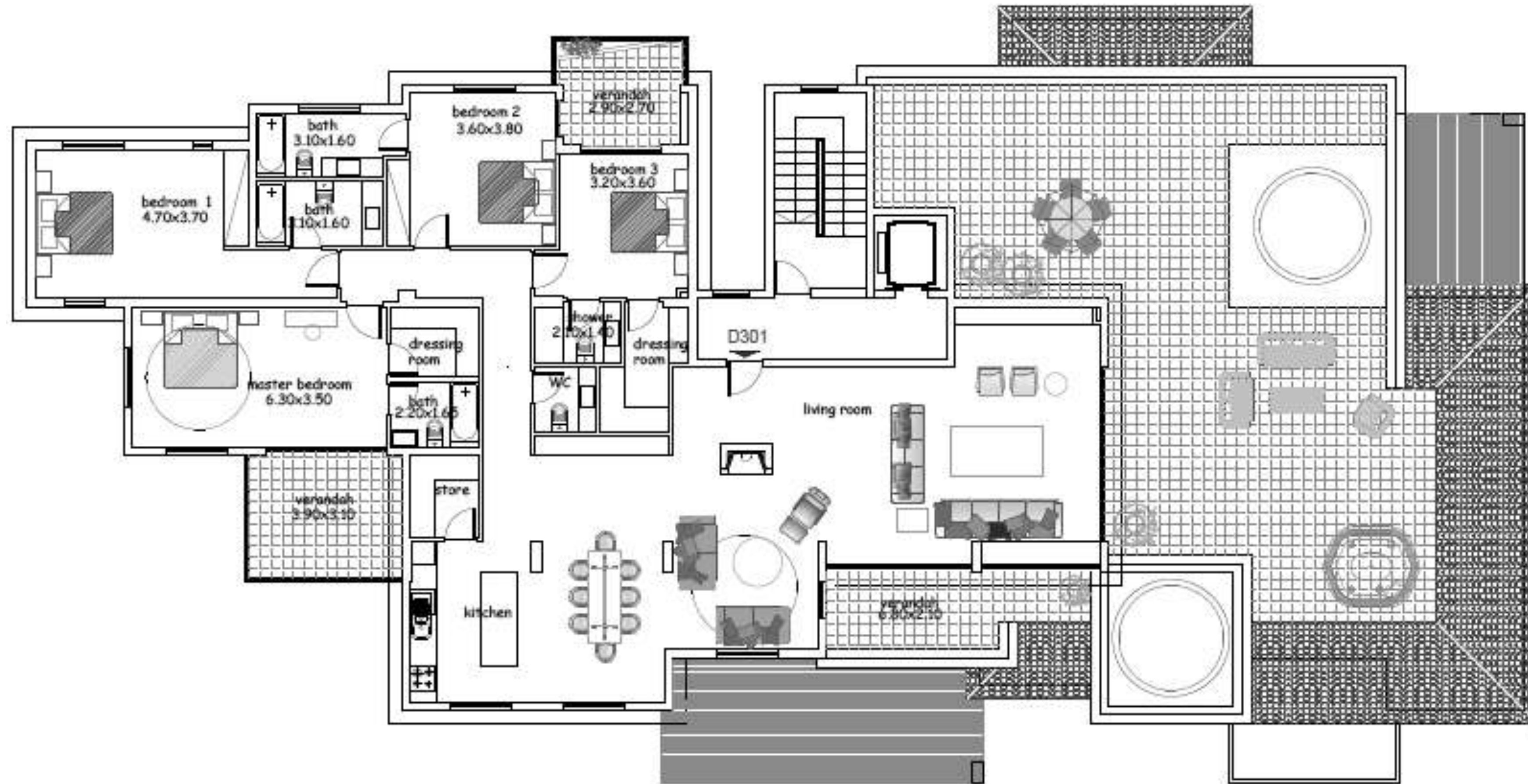






SAMPLE FOUR BEDROOM PENTHOUSE

TOTAL COVERED AREA FROM 156-315 m²



D O M U S

C O N T E M P O R A R Y L I V I N G