

Kapparis Homes 



RESIDENCY & CITIZENSHIP
QUALIFIED
PROPERTY

阿拉斯亚
智能型住宅

LUXURY VILLAS
奢华别墅

PROTARAS | CYPRUS

FAMAGUSTA'S
MAGICAL SANDY
BEACHES

布达拉斯 奇妙的沙滩



Nissi Bay Ayia Napa was awarded 1st place by trip advisor users for best beaches in Europe 2011

圣纳帕的尼斯海湾于2011年获得由“旅游顾问”评选的欧洲最佳沙滩第一名

Protaras

Situated on the east side of the Island, Protaras covers approximately 5km of the golden Famagusta Coastline.

Protaras became an idyllic holiday resort largely due to the beautiful sandy beaches in its vicinity. There are several excellent beaches, each developed to appeal to a particular type of holidaymaker. For instance, the main beach "Fig Tree Bay", regarded as one of the most popular beaches on the island, offers a wide range of water-sports, while to the north of the coastline, the tranquil waters of Skoutari Beach, make for great snorkelling.

Cyprus

塞浦路斯

斯塔大约5公里的黄金海岸线。作为一个完美的度假旅游景区，很大原因得益于布达拉斯以及附近地区的迷人沙滩。这里有许多著名的海滩，专为不同群体的游客而打造。例如“无花果树湾”，这是岛上最著名的海滩之一，在这里您可以感受各式各样的海上活动，而北部的海岸线，像斯库塔利海滩d宁静的海水最适合浮潜。

Kapparis Homes



TRAVEL TIMES TO
 Nicosia 50 mins | Limassol 1hr 10 mins | Larnaca 1hr 10 mins

TRAVEL TIMES TO LARNACA INT
 Dubai 3hrs 25mins | Bahrain 2hrs 40mins | Frankfurt 3hrs 10 mins

AIRPORT TRANSFER TIMES
 Larnaca 1hr 10 mins

到以下地点的时间
 尼科西亚: 50分钟 | 利马索尔: 1小时10分钟 | 拉纳卡国际机场: 1小时

以下地点到拉纳卡国际机场的时间
 迪拜: 3小时25分钟 | 巴林岛: 2小时40分钟 | 法兰克福: 3小时10分钟

到机场的时间
 拉纳卡国际机场: 1小时



The information presented herein is to be used for reference only and non-contractually binding. The Vendor reserves the right for any changes at the Vendor's sole discretion.
 信息仅供参考，无合同效力。供应商保留任何更改的权利。

A Unique Home Collection



An outstanding collection of luxury homes in Protaras's newest Residential community, an area of low building density only for houses and green areas, featuring residences with high specifications and customized living. **Kapparis** Homes phase II is the location for 13, three bedroom homes that come ensure sea views to the nearest Kapparis beach. This modern and stylish complex will be situated in Protaras, the resort of Kapparis is a short walk away offering all the amenities and facilities that help to make it the perfect holiday home or investment property.

The highway to Larnaca is just 3 km away giving easy access to the highway network for access to Limassol and Nicosia.

该豪华别墅项目坐落在布达拉斯，位于低建筑密度的新型住宅小区内，为高端定制的特色住宅。阿拉斯亚智能型住宅项目由13座三居室独栋别墅组成，位于卡帕里斯海滨拥有无敌海景景观。这个现代化住宅项目将落成于布达拉斯与卡帕里斯地区之间，距离各项设施仅数百米之遥，使其成为理想的度假之家或投资项目。去往拉那卡、利马索尔和尼科西亚的高速公路路口仅3公里的距离。

The information presented herein is to be used for reference only and non-contractually binding. The Vendor reserves the right for any changes at the Vendor's sole discretion.

信息仅供参考，无合同效力。供应商保留任何更改的权利。



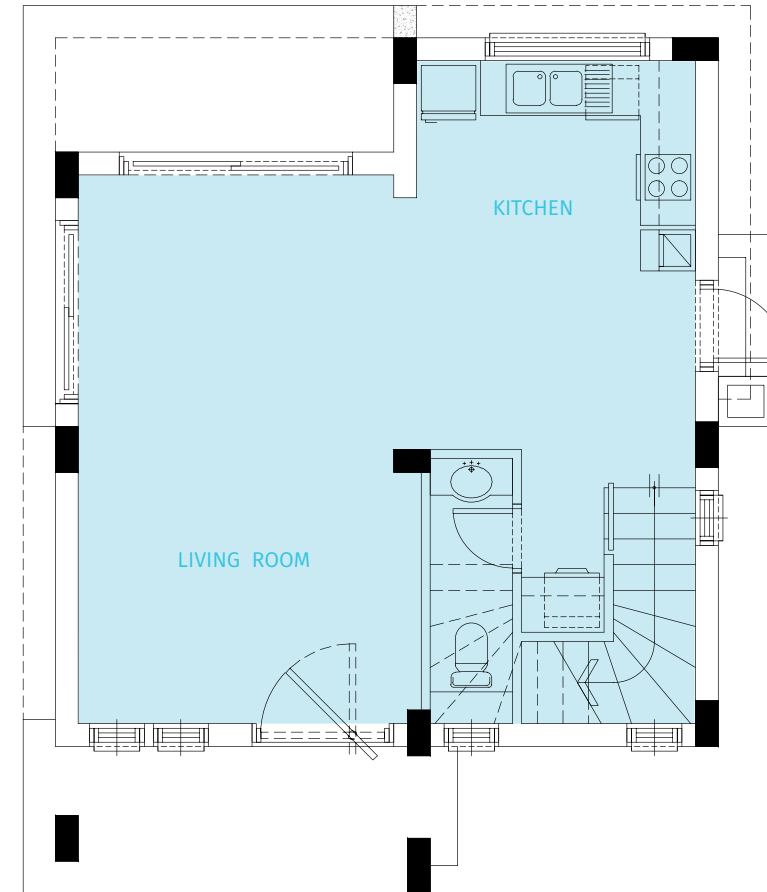
规划图 The Layout



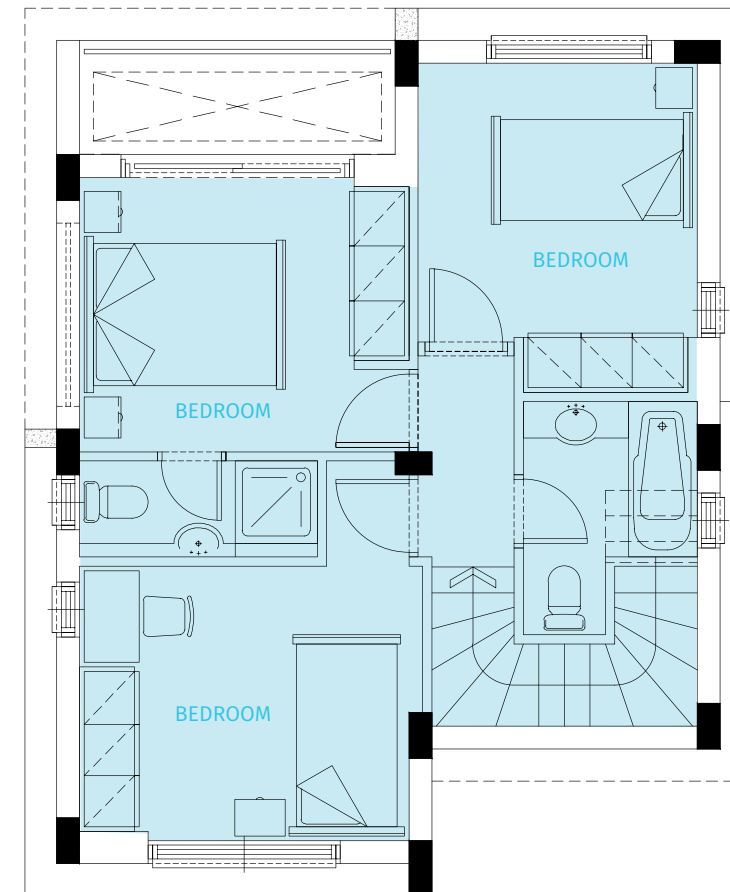
Elegant design
优雅的设计

SOPHISTICATED INTERIOR & EXTERIOR

高端科技室内外装修



GROUND FLOOR | 底层



FIRST FLOOR | 一层

PROJECT MAP

项目位置图

